

VMware vCenter Converter Standalone User's Guide

vCenter Converter Standalone 4.3

This document supports the version of each product listed and supports all subsequent versions until the document is replaced by a new edition. To check for more recent editions of this document, see <http://www.vmware.com/support/pubs>.

EN-000369-00

vmware[®]

You can find the most up-to-date technical documentation on the VMware Web site at:

<http://www.vmware.com/support/>

The VMware Web site also provides the latest product updates.

If you have comments about this documentation, submit your feedback to:

docfeedback@vmware.com

Copyright © 2008–2010 VMware, Inc. All rights reserved. This product is protected by U.S. and international copyright and intellectual property laws. VMware products are covered by one or more patents listed at <http://www.vmware.com/go/patents>.

VMware is a registered trademark or trademark of VMware, Inc. in the United States and/or other jurisdictions. All other marks and names mentioned herein may be trademarks of their respective companies.

VMware, Inc.
3401 Hillview Ave.
Palo Alto, CA 94304
www.vmware.com

Contents

About This Book	5
1 Introduction to VMware vCenter Converter Standalone	7
Migration with Converter Standalone	8
Converter Standalone Components	8
Cloning and System Configuration of Physical Machines	9
Types of Data Cloning Operations	14
Using Converter Standalone with Virtual Machine Sources and System Images	16
System Settings Affected by Conversion	17
Changes to Virtual Hardware	17
2 System Requirements	19
Supported Operating Systems	19
Installation Space Requirements	20
Supported Source Types	21
Supported Destination Types	23
Configuring Permissions for VirtualCenter Users	24
Support for IPv6 in Converter Standalone	24
TCP/IP and UDP Port Requirements for Conversion	25
Requirements for Remote Hot Cloning of Windows Operating Systems	26
3 Installing and Uninstalling Converter Standalone	31
Perform a Local Installation on Windows	31
Perform a Client-Server Installation in Windows	32
Perform a Command-Line Installation in Windows	33
Command-Line Options for Windows Installation	34
Modify Converter Standalone in Windows	35
Repair Converter Standalone in Windows	36
Uninstall Converter Standalone in Windows	36
Connect to a Remote Converter Standalone Server	37
4 Convert a Physical or Virtual Machine	39
Start the Wizard for a Conversion	40
Select a Source Machine to Convert	40
Select a Destination for the New Virtual Machine	46
Configure the Hardware of the Destination Virtual Machine	49
Configure the Software on the Destination Virtual Machine	60
Configure the Conversion Task	65
Review the Summary and Submit the Conversion Task	71

5	Configure Virtual Machines	73
	Save Sysprep Files	73
	Start the Configuration Wizard	74
	Select a Source Machine to Configure	74
	Select the Options to Configure	77
	Review and Submit the Configuration Task	81
6	Managing Conversion and Configuration Tasks	83
	Manage Tasks in the Task List	83
	Index	89

About This Book

The *VMware vCenter Converter Standalone User's Guide* provides information about installing and using VMware® vCenter Converter Standalone 4.3.

Intended Audience

This book is intended for users who want to do the following:

- Install, upgrade, or use Converter Standalone
- Nonintrusively copy and transform physical machines into VMware virtual machines that VMware vCenter manages

The material in this book is written for information systems engineers, software developers, QA engineers, trainers, salespeople who run demonstrations, and anyone who wants to create virtual machines.

VMware Technical Publications Glossary

VMware Technical Publications provides a glossary of terms that might be unfamiliar to you. For definitions of terms as they are used in VMware technical documentation, go to <http://www.vmware.com/support/pubs>.

Document Feedback

VMware welcomes your suggestions for improving our documentation. If you have comments, send your feedback to docfeedback@vmware.com.

Technical Support and Education Resources

The following technical support resources are available to you. To access the current version of this book and other books, go to <http://www.vmware.com/support/pubs>.

Online and Telephone Support

To use online support to submit technical support requests, view your product and contract information, and register your products, go to <http://www.vmware.com/support>.

Customers with appropriate support contracts should use telephone support for the fastest response on priority 1 issues. Go to http://www.vmware.com/support/phone_support.html.

Support Offerings

To find out how VMware support offerings can help meet your business needs, go to <http://www.vmware.com/support/services>.

VMware Professional Services

VMware Education Services courses offer extensive hands-on labs, case study examples, and course materials designed to be used as on-the-job reference tools. Courses are available onsite, in the classroom, and live online. For onsite pilot programs and implementation best practices, VMware Consulting Services provides offerings to help you assess, plan, build, and manage your virtual environment. To access information about education classes, certification programs, and consulting services, go to <http://www.vmware.com/services>.

Introduction to VMware vCenter Converter Standalone

1

VMware® vCenter Converter Standalone is a scalable solution to convert virtual and physical machines to VMware virtual machines. You can also configure existing virtual machines in your vCenter Server environment.

Converter Standalone 4.3 eases the exchange of virtual machines among the following products.

- VMware hosted products can be both conversion sources and conversion destinations.
 - VMware Workstation
 - VMware Fusion™
 - VMware Server
 - VMware Player
- Virtual machines running on an ESX instance that vCenter Server manages can be both conversion sources and conversion destinations.
- Virtual machines running on unmanaged ESX hosts can be both conversion sources and conversion destinations.

This chapter includes the following topics:

- [“Migration with Converter Standalone,”](#) on page 8
- [“Converter Standalone Components,”](#) on page 8
- [“Cloning and System Configuration of Physical Machines,”](#) on page 9
- [“Types of Data Cloning Operations,”](#) on page 14
- [“Using Converter Standalone with Virtual Machine Sources and System Images,”](#) on page 16
- [“System Settings Affected by Conversion,”](#) on page 17
- [“Changes to Virtual Hardware,”](#) on page 17

Migration with Converter Standalone

Migration with Converter Standalone involves converting physical machines, virtual machines, and system images for use in VMware hosted and managed products.

You can convert virtual machines that vCenter Server manages for use in other VMware products. You can use Converter Standalone to perform a number of conversion tasks.

- Import running remote physical and virtual machines as virtual machines to standalone ESX/ESXi or ESX/ESXi hosts that vCenter Server manages.
- Import virtual machines hosted by VMware Workstation or Microsoft Hyper-V Server to ESX/ESXi hosts that vCenter Server manages.
- Import third-party backup or disk images to ESX/ESXi hosts that vCenter Server manages.
- Export virtual machines managed by vCenter Server hosts to other VMware virtual machine formats.
- Configure virtual machines managed by vCenter Server so that they are bootable, and to install VMware Tools or customize their guest operating systems.
- Customize the guest operating systems of virtual machines in the vCenter Server inventory (for example, change the host name or network settings).
- Reduce the time needed to set up new virtual machine environments.
- Migrate legacy servers to new hardware without reinstalling operating systems or application software.
- Perform migrations across heterogeneous hardware.
- Readjust volume sizes and place volumes on separate virtual disks.

Converter Standalone Components

The Converter Standalone application consists of Converter Standalone server, Converter Standalone worker, Converter Standalone client, and Converter Standalone agent.

Converter Standalone server

Enables and performs the import and export of virtual machines. The Converter Standalone server comprises two services, Converter Standalone server and Converter Standalone worker. The Converter Standalone worker service is always installed with the Converter Standalone server service.

Converter Standalone agent

The Converter Standalone server installs the agent on Windows physical machines to import them as virtual machines. You can choose to remove the Converter Standalone agent from the physical machine automatically or manually after the import is complete.

Converter Standalone client

The Converter Standalone server works with the Converter Standalone client. The client component consists of the Converter Standalone user interface, which provides access to the Conversion and the Configuration wizards, and allows you to manage the conversion and the configuration tasks.

VMware vCenter Converter Boot CD

The VMware vCenter Converter Boot CD is a separate component that you can use to perform cold cloning on a physical machine. Converter Standalone 4.3 does not provide a Boot CD, but you can use previous versions of the Boot CD to perform cold cloning. See [“Prepare for Cold Cloning,”](#) on page 13.

Cloning and System Configuration of Physical Machines

When you convert a physical machine, Converter Standalone uses cloning and system reconfiguration steps to create and configure the destination virtual machine so that it works successfully in the vCenter Server environment. Because the migration process is nondestructive to the source, you can continue to use the original source machine after the conversion completes.

Cloning is the process of copying the source physical disks or volumes for the destination virtual machine. Cloning involves copying the data on the source machine's hard disk and transferring that data to a destination virtual disk. The destination virtual disk might have a different geometry, size, file layout, and other characteristics, so the destination virtual disk might not be an exact copy of the source disk.

System reconfiguration adjusts the migrated operating system to enable it to function on virtual hardware.

If you plan to run an imported virtual machine on the same network as the source physical machine, you must modify the network name and IP address on one of the machines, so that the physical and virtual machines can coexist. Besides, you must make sure that the Windows source machine and the destination virtual machine have different computer names.

NOTE You cannot move original equipment manufacturer (OEM) licenses between physical machines. The license is attached to the server when you purchase it from the OEM and cannot be reassigned. You can only reassign retail and volume licenses to new physical servers. If you migrate an OEM Windows image, you must have a Windows Server Enterprise or Datacenter Edition license to run multiple virtual machines.

Hot and Cold Cloning of Physical Machines

Although Converter Standalone 4.3 supports only hot cloning, you can still perform cold cloning by using the VMware Converter 4.1.x Boot CD. Depending on your virtual environment, you can choose to use hot or cold cloning.

Hot cloning, also called live cloning or online cloning, entails converting the source machine while it is running its operating system. Hot cloning lets you clone machines without shutting them down.

Because processes continue to run on the source machine during conversion, the resulting virtual machine is not an exact copy of the source machine.

You can set Converter Standalone to synchronize the destination virtual machine with the source machine after hot cloning. Synchronization is performed by transferring from the source to the destination the blocks that were changed during the initial cloning period. To avoid loss of data on the destination virtual machine, Converter Standalone can shut down certain Windows services before the synchronization. Based on your settings, Converter Standalone shuts down the selected Windows services so that no critical changes occur on the source machine while destination is being synchronized.

Converter Standalone can shut down the source machine and power on the destination machine when the conversion process is complete. When combined with synchronization, this action allows seamless migration of a physical machine source to a virtual machine destination. The destination machine takes over the source machine operations with the least possible downtime.

NOTE When you hot clone dual-boot systems, you can clone only the default operating system to which the `boot.ini` file points. To clone the nondefault operating system, change the `boot.ini` file to point to the other operating system and reboot. After the other operating system is booted, you can hot clone it. If your second operating system is Linux, you can boot it and clone it using the standard procedure for cloning Linux physical machine sources.

Cold cloning, also called offline cloning, entails cloning the source machine when it is not running its operating system. When you cold clone a machine, you reboot the source machine using a CD that has its own operating system and the vCenter Converter application on it. Cold cloning allows you to create the most consistent copy of the source machine because nothing changes on the source machine during the conversion. Cold cloning leaves no footprint on the source machine, but requires you to have physical access to the source machine that is being cloned.

When you cold clone a Linux source, the resulting virtual machine is an exact replica of the source machine and you cannot configure the destination virtual machine. You must configure the destination virtual machine after the cloning is complete.

[Table 1-1](#) compares the hot and cold cloning modes.

Table 1-1. Hot and Cold Cloning Comparison

Comparison Criteria	Hot Cloning with Converter Standalone 4.3	Cold Cloning with Converter Enterprise 4.1.x
Licensing	No license required with VMware vCenter Converter Standalone 4.3.	License file required for Enterprise features of VMware Converter Enterprise.
Required installation	Full Converter Standalone installation is required. As part of the cloning process, Converter Standalone agent is installed on the source machine remotely.	No installation is required. All components required for the conversion are on the CD.
Supported sources	Local and remote powered-on physical or virtual machines.	Local powered-off physical or virtual machines.
Advantages	<ul style="list-style-type: none"> ■ Does not require direct access to the source machine. ■ You can clone the source machine while it is running. 	<ul style="list-style-type: none"> ■ Creates the most consistent copy of the source machine. ■ Leaves no footprint on the source machine.
Disadvantages	<ul style="list-style-type: none"> ■ Applications that constantly modify files need to be VSS aware to allow Converter Standalone to create a consistent snapshot for cloning. ■ Dynamic source disks are read but not preserved during volume-based conversions. Dynamic disks are converted into basic volumes on the target virtual machine. 	<ul style="list-style-type: none"> ■ You must power off the source machine to clone it. ■ Requires physical access to the source machine. ■ Hardware detection and configuration of Boot CD. ■ Converter Standalone 4.x features are not supported.
Use	<ul style="list-style-type: none"> ■ To clone running source machines without shutting them down. ■ To clone unique hardware that the Boot CD does not recognize. 	<ul style="list-style-type: none"> ■ To clone a system that Converter Standalone does not support. ■ To preserve the exact disk layout in the target. ■ To preserve logical volumes in dynamic disks (Windows) or LVM (Linux).
When to not use	When you do not want anything to be installed on the source system.	<ul style="list-style-type: none"> ■ When you want Linux P2V with automatic reconfiguration. ■ When you do not have physical access to the source machine. ■ When you cannot afford a long downtime of the source system. ■ To perform synchronization after cloning.

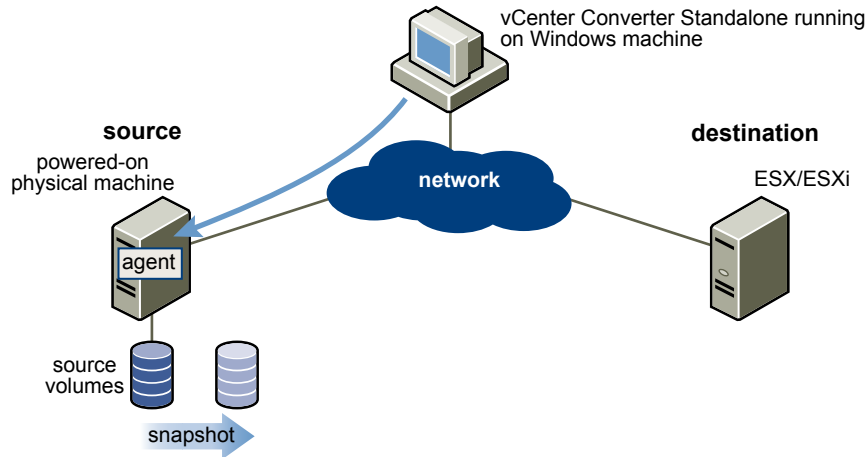
Remote Hot Cloning of Physical Machine Sources That Are Running Windows

You can use the Conversion wizard to set up conversion tasks and Converter Standalone components perform all of the cloning tasks.

The following workflow is an example of remote hot cloning in which the physical machine being cloned experiences no downtime.

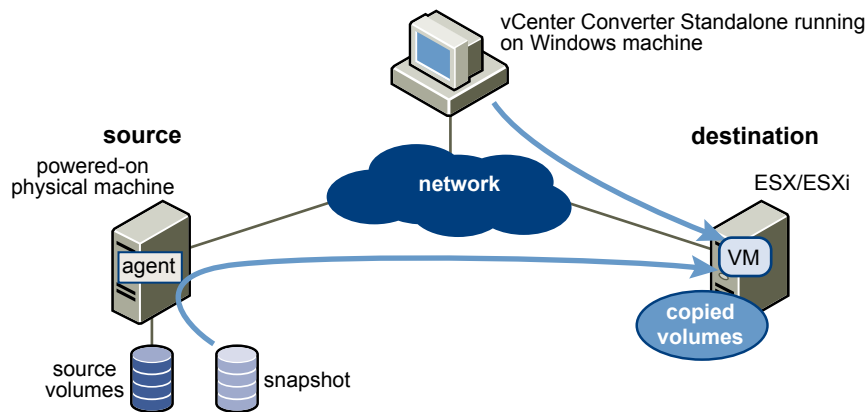
- 1 Converter Standalone prepares the source machine for the conversion.

Converter Standalone installs the agent on the source machine and the agent takes a snapshot of the source volumes.



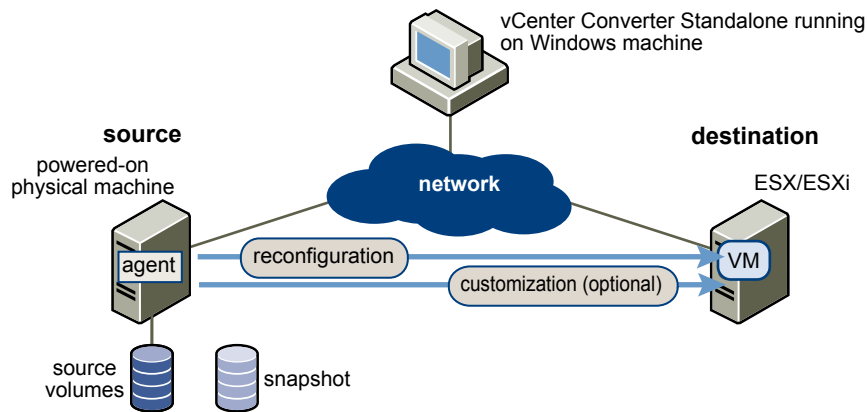
- 2 Converter Standalone prepares the virtual machine on the destination machine.

Converter Standalone creates a virtual machine on the destination machine and the agent copies volumes from the source machine to the destination machine.



- 3 Converter Standalone completes the conversion process.

The agent installs the required drivers to allow the operating system to boot in a virtual machine and personalizes the virtual machine (changes the IP information, for example).



- 4 Optionally, Converter Standalone uninstalls the agent from the source machine.

The virtual machine is ready to run on the destination server.

Remote Hot Cloning of Physical Machine Sources That Are Running Linux

The conversion process of physical machines that are running Linux operating systems differs from that of Windows machines.

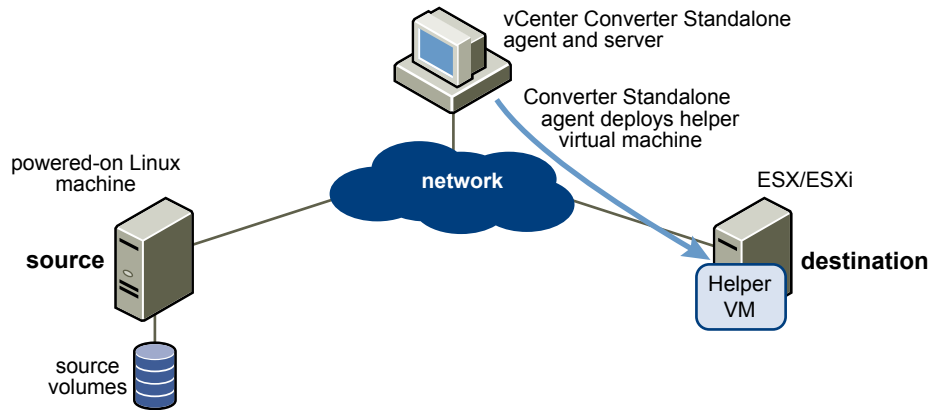
In Windows conversions, the Converter Standalone agent is installed on the source machine and the source information is pushed to the destination.

In Linux conversions, no agent is deployed on the source machine. Instead, a helper virtual machine is created and deployed on the destination ESX/ESXi host. The source data is then copied from the source Linux machine to the helper virtual machine. After the conversion is complete, the helper virtual machine shuts down to become the destination virtual machine the next time you power it on.

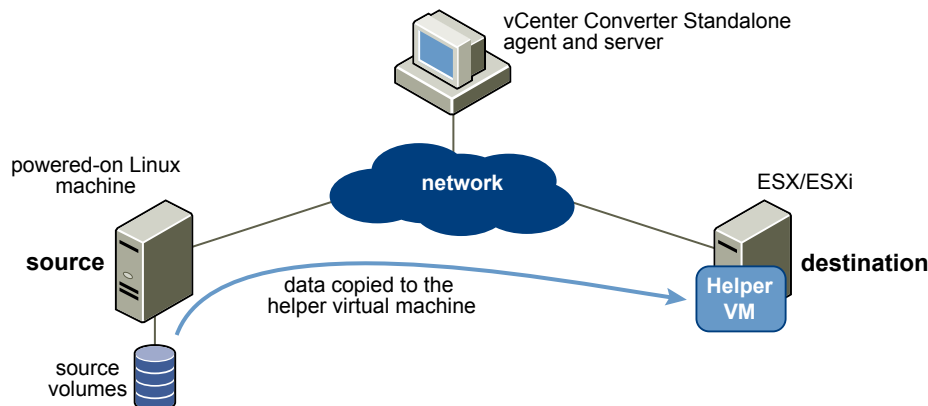
Converter Standalone supports conversion of Linux sources only to managed destinations.

The following workflow demonstrates the principles of hot cloning physical machine sources that run Linux to managed destinations.

- 1 Converter Standalone uses SSH to connect to the source machine and retrieves source information. Converter Standalone creates an empty helper virtual machine based on your conversion task settings. The helper virtual machine serves as a container for the new virtual machine during conversion. Converter Standalone deploys the helper virtual machine on the managed destination, an ESX/ESXi host. The helper virtual machine boots from a *.iso file that is located on the Converter Standalone server machine.



- 2 The helper virtual machine powers on, boots from the Linux image, connects to the source machine through SSH, and starts retrieving the selected data from the source. While you set up the conversion task, you can select which source volumes to be copied to the destination machine.



- 3 Optionally, after data is copied, the destination virtual machine is reconfigured to allow the operating system to boot in a virtual machine.
- 4 Converter Standalone shuts down the helper virtual machine. The conversion process is complete.
You can configure Converter Standalone to power on the newly created virtual machine after the conversion is complete.

Prepare for Cold Cloning

Because Converter Standalone 4.3 does not support cold cloning, you must use the Boot CD of an earlier vCenter Converter edition. The features supported on the Boot CD depend on the product version you choose.

When you cold clone a machine, you reboot the source machine from a CD that has its own operating system and also includes the vCenter Converter application. You can find a detailed description of the cold cloning process in the documentation of the Boot CD you select to use.

VMware vCenter Converter 4.1.x is not a free software product.

Procedure

- 1 To obtain a Boot CD, go to the VMware Download Web site and download the vCenter Converter 4.1.x installation package.
- 2 Extract the Boot CD .iso file from the installation package.
- 3 Write the Boot CD .iso file on a CD.

What to do next

Follow the onscreen instructions to proceed with cold cloning.

Types of Data Cloning Operations

Converter Standalone supports disk-based cloning, volume-based cloning, and linked-cloning modes.

IMPORTANT Converter Standalone cannot detect any source volumes and file systems that are located on physical disks larger than 2TB.

Table 1-2. Cloning Modes

Data Copy Types	Application	Description
Volume based	Copy volumes from the source machine to the destination machine.	Volume-based cloning is relatively slow. File-level cloning is slower than block-level cloning. Dynamic disks are converted into basic volumes on the target virtual machine.
Disk based	Create copies of the source machines, for all types of basic and dynamic disks.	You cannot select which data to copy. Disk-based cloning is faster than volume-based cloning.
Linked clone	Use to quickly check compatibility of non-VMware images	For certain third-party sources, the linked clone is corrupted if you power on the source machine after the conversion. Linked cloning is the fastest (but incomplete) cloning mode that Converter Standalone supports.

Volume-Based Cloning

During volume-based cloning, volumes from the source machine are copied to the destination machine. Converter Standalone supports volume-based cloning for hot and cold cloning, and during the import of existing virtual machines.

During volume-based cloning, all volumes in the destination virtual machine are converted to basic volumes, regardless of their type in the corresponding source volume.

Volume-based cloning is performed at the file level or block level, depending on the destination volume size that you select.

Volume-based cloning at the file level Performed when you select a size smaller than the original volume for NTFS volumes or you choose to resize a FAT volume.

Volume-based cloning at the file level is supported only for FAT, FAT32, NTFS, ext2, ext3, and ReiserFS file systems.

Dynamic source disks are read but not preserved during volume-based conversions. Dynamic disks are converted into basic volumes on the target virtual machine.

Volume-based cloning at the block level

Performed when you choose to preserve the size of the source volume or when you specify a larger volume size for NTFS source volumes.

For certain cloning modes, Converter Standalone might not support some types of source volumes.

[Table 1-3](#) shows the supported and nonsupported source volume types.

Table 1-3. Supported and Nonsupported Source Volumes

Cloning Mode	Supported Source Volumes	Nonsupported Source Volumes
Virtual machine conversion	<ul style="list-style-type: none"> ■ Basic volumes ■ All types of dynamic volumes ■ Master boot record (MBR) disks 	<ul style="list-style-type: none"> ■ RAID ■ GUID partition table (GPT) disks
Powered-on machine conversion	All types of source volumes that Windows recognizes	

Disk-Based Cloning

Converter Standalone supports disk-based cloning to import existing virtual machines.

Disk-based cloning transfers all sectors from all disks and preserves all volume metadata. The destination virtual machine receives partitions of the same type, size, and structure, as the partitions of the source virtual machine. All volumes on the source machine's partitions are copied as they are.

Disk-based cloning supports all types of basic and dynamic disks.

Full and Linked Clones

Clones can be full or linked depending on the amount of data copied from the source to the destination machine.

A full clone is an independent copy of a virtual machine that shares nothing with the parent virtual machine after the cloning operation. Ongoing operation of a full clone is separate from the parent virtual machine.

Because a full clone does not share virtual disks with the parent virtual machine, full clones generally perform better than linked clones. Full clones take longer to create than linked clones. Creating a full clone can take several minutes if the files involved are large.

You can create a full clone by using any disk clone type other than the linked clone type.

A linked clone is a copy of a virtual machine that shares virtual disks with the parent virtual machine in an ongoing manner. A linked clone is a fast way to convert and run a new virtual machine. You can create a linked clone from the current state, or snapshot, of a powered-off virtual machine. This practice conserves disk space and allows multiple virtual machines to use the same software installation.

All files available on the source machine at the moment of the snapshot continue to remain available to the linked clone. Ongoing changes to the virtual disk of the parent do not affect the linked clone, and changes to the disk of the linked clone do not affect the source machine. If you make changes to a source Virtual PC and Virtual Server machines, or to LiveState images, the linked clone is corrupted and you cannot use it anymore.

A linked clone must have access to the source. Without access to the source, you cannot use a linked clone at all.

For more information on how to create a linked clone, see [“Create a Linked Clone,”](#) on page 57.

Destination Disk Types

Depending on the destination you select, several destination disk types are available.

For detailed information on destination virtual disks types, see [Table 1-4](#).

Table 1-4. Destination Disk Types

Destination	Available Disk Types	
VMware Infrastructure virtual machine	Flat	Copies the entire source disk size to the destination, regardless of its used and free space.
	Thin	For managed destinations that support thin provisioning through GUI, creates an expanding disk on the destination. For example, if the source disk size is 10GB, but only 3GB is used, the created destination disk is 3GB but can expand to 10GB.
VMware Workstation or other VMware virtual machine	Pre-allocated	Copies the entire source disk size to the destination, regardless of its used and free space.
	Not pre-allocated	Creates an expanding disk on the destination. For example, if the source disk size is 20GB, but only 5GB is used, the created destination disk is 5GB but can expand to 20GB. Take this expansion into account when you calculate the free disk space on the destination datastore.
	2GB Split pre-allocated	Splits the source disk into 2GB sections on the destination.
	2GB Split not pre-allocated	Creates 2GB sections on the destination that include only the real used space on the source disk. As the destination disk grows, new 2GB sections are created to accommodate the new data until the size reaches that of the original source disk.

To support destination virtual disks on FAT file systems, divide the source data into 2GB files.

Using Converter Standalone with Virtual Machine Sources and System Images

With Converter Standalone, you can convert virtual machines and system images, and configure VMware virtual machines.

Converting virtual machines

You can convert VMware virtual machines from and to Workstation, VMware Player, VMware ACE, VMware Fusion, ESX, ESXi Embedded, ESXi Installable, and VMware Server. You can also import virtual machines from Microsoft Virtual Server and Virtual PC.

To be able to run an imported VMware virtual machine and its source virtual machine on the same network, you must modify the network name and IP address on one of the virtual machines. Modifying the network name and IP address allows the original and new virtual machines to coexist on the same network.

Configuring virtual machines

If the VMware virtual machines have disks that are populated by using a backup of a physical host or by cold cloning, Converter Standalone prepares the image to run on VMware virtual hardware. If you have used a third-party virtualization software to create a virtual machine on an ESX host, you can use Converter Standalone to reconfigure it. You can also reconfigure any operating system installed on a multiboot machine if you have imported the virtual machine to an ESX host. Before you reconfigure a multiboot machine, you must change the `boot.ini` file.

System Settings Affected by Conversion

A VMware virtual machine that Converter Standalone creates contains a copy of the disk state of the source physical machine, virtual machine, or system image. Some hardware-dependent drivers and sometimes the mapped drive letters might not be preserved.

The following source computer settings remain unchanged:

- Operating system configuration (computer name, security ID, user accounts, profiles, preferences, and so on)
- Applications and data files
- Volume serial number for each disk partition

Because the target and the source virtual machines or system images have the same identities (name, SID, and so on), running them on the same network might result in conflicts. To redeploy the source virtual machine or system image, make sure that you do not run the source and target images or virtual machines on the same network at the same time.

For example, if you use Converter Standalone to test whether you can run a Virtual PC virtual machine as a VMware virtual machine without first decommissioning the original Virtual PC machine, you must first resolve the duplicate ID problem. You can resolve this problem by customizing the virtual machines in the Conversion or the Configuration wizard.

Changes to Virtual Hardware

After conversion, most applications function correctly on the VMware virtual machine because their configuration and data files have the same location as on the source virtual machine. However, applications might not work if they depend on specific characteristics of the underlying hardware, such as the serial number or the device manufacturer.

[Table 1-5](#) contains hardware changes that might occur after virtual machine migration.

Table 1-5. Hardware Changes After Virtual Machine Migration

Hardware	Behavior
CPU model and serial numbers	Might change after migration if they are activated. They correspond to the physical computer hosting the VMware virtual machine.
Ethernet adapters	Might change (AMD PCNet or VMXnet) and have a different MAC address. The IP address of each interface must be individually reconfigured.
Graphics cards	Might change after migration (VMware SVGA card).

Table 1-5. Hardware Changes After Virtual Machine Migration (Continued)

Hardware	Behavior
Disks and partitions	The number of disks and partitions might change if you rearrange volumes during the cloning process. Each disk device might have a different model and different manufacturer strings.
Primary disk controllers	Might differ from the source machine.

Applications might not work if they depend on devices that are not available within a virtual machine.

System Requirements

You must consider the compatibilities and the interoperabilities among the systems on which and with which the Converter Standalone components work.

This chapter includes the following topics:

- [“Supported Operating Systems,”](#) on page 19
- [“Installation Space Requirements,”](#) on page 20
- [“Supported Source Types,”](#) on page 21
- [“Supported Destination Types,”](#) on page 23
- [“Configuring Permissions for VirtualCenter Users,”](#) on page 24
- [“Support for IPv6 in Converter Standalone,”](#) on page 24
- [“TCP/IP and UDP Port Requirements for Conversion,”](#) on page 25
- [“Requirements for Remote Hot Cloning of Windows Operating Systems,”](#) on page 26

Supported Operating Systems

You can install Converter Standalone components only on Windows operating systems. Converter Standalone supports Windows and Linux operating systems as sources for powered-on-machine conversions and virtual-machine conversions. You cannot reconfigure Linux distributions.

For a list of operating systems on which you can install Converter Standalone components, see [Table 2-1](#).

Table 2-1. Supported Operating Systems

Supported Operating Systems	Converter Standalone Server Support	Converter Standalone Client Support	Converter Standalone Agent Support	Source for Powered-On Machine Conversions	Source for Virtual Machine Conversions	Configuration Source
Windows XP Professional (32-bit and 64-bit) SP3	Yes	Yes	Yes	Yes	Yes	Yes
Windows 2003 (32-bit and 64-bit) SP2, Revision 2	Yes	Yes	Yes	Yes	Yes	Yes
Windows Vista (32-bit and 64-bit) SP2	Yes	Yes	Yes	Yes	Yes	Yes
Windows Server 2008 (32-bit and 64-bit) SP2	Yes	Yes	Yes	Yes	Yes	Yes

Table 2-1. Supported Operating Systems (Continued)

Supported Operating Systems	Converter Standalone Server Support	Converter Standalone Client Support	Converter Standalone Agent Support	Source for Powered-On Machine Conversions	Source for Virtual Machine Conversions	Configuration Source
Windows Server 2008 R2 (64-bit)	Yes	Yes	Yes	Yes	Yes	Yes
Windows 7 (32-bit and 64-bit)	Yes	Yes	Yes	Yes	Yes	Yes
Red Hat Enterprise Linux 2.x (32-bit and 64-bit)	No	No	No	Yes	Yes	No
Red Hat Enterprise Linux 3.x (32-bit and 64-bit)	No	No	No	Yes	Yes	No
Red Hat Enterprise Linux 4.x (32-bit and 64-bit)	No	No	No	Yes	Yes	No
Red Hat Enterprise Linux 5.x (32-bit and 64-bit)	No	No	No	Yes	Yes	No
SUSE Linux Enterprise Server 8.x (32-bit and 64-bit)	No	No	No	Yes	Yes	No
SUSE Linux Enterprise Server 9.x (32-bit and 64-bit)	No	No	No	Yes	Yes	No
SUSE Linux Enterprise Server 10.x (32-bit and 64-bit)	No	No	No	Yes	Yes	No
SUSE Linux Enterprise Server 11.x (32-bit and 64-bit)	No	No	No	Yes	Yes	No
Ubuntu 5.x (32-bit and 64-bit)	No	No	No	Yes	Yes	No
Ubuntu 6.x (32-bit and 64-bit)	No	No	No	Yes	Yes	No
Ubuntu 7.x (32-bit and 64-bit)	No	No	No	Yes	Yes	No
Ubuntu 8.x (32-bit and 64-bit)	No	No	No	Yes	Yes	No
Ubuntu 9.x (32-bit and 64-bit)	No	No	No	Yes	Yes	No
Ubuntu 10.04 (32-bit and 64-bit)	No	No	No	Yes	Yes	No

Installation Space Requirements

During installation, you can select the Converter Standalone components that you want to install. All components require different amounts of free disk space to install.

[Table 2-2](#) shows the disk space required to install Converter Standalone and its components.

Table 2-2. Installation Space Requirements

Installation Component	Disk Space Required	Disk Space Requirement for Decompressed Files
Installation file	100MB	100MB
vCenter Converter client	25MB	25MB
vCenter Converter server	120MB	300MB
vCenter Converter agent	25MB	100MB

Supported Source Types

With Converter Standalone, you can convert remote powered-on machines, powered-off VMware virtual machines, Hyper-V virtual machines, and other third-party virtual machines and system images.

[Table 2-3](#) shows the sources that Converter Standalone supports.

Table 2-3. Supported Sources

Source Type	Sources
Powered-on machines	<ul style="list-style-type: none"> ■ Remote Windows physical machines ■ Remote Linux physical machines ■ Local Windows physical machines ■ Windows virtual machines running on Hyper-V Server ■ Powered-on VMware virtual machines
VMware Infrastructure virtual machines	Powered-off virtual machines managed by the following servers: <ul style="list-style-type: none"> ■ VirtualCenter 2.5 ■ vCenter Server 4.0 and 4.1 ■ ESX Server 2.5.x (if VirtualCenter 2.5 or higher manages ESX) ■ ESX Server 3.0, 3.5, 4.0, and 4.1 ■ ESXi 3.5, 4.0, and 4.1
VMware virtual machines	Powered-off hosted virtual machines of the following versions: <ul style="list-style-type: none"> ■ VMware Workstation 5.x, 6.x, and 7.x ■ VMware Fusion 2.x and 3.x ■ VMware Player 2.x and 3.x ■ VMware Server 2.x

Table 2-3. Supported Sources (Continued)

Source Type	Sources
Hyper-V Server virtual machines	<p>Powered-off virtual machines with the following guest operating systems:</p> <ul style="list-style-type: none"> ■ Windows Server 2008 (x86 and x64), SP1, SP2, and R2 ■ Windows Server 2008 (x86 and x64) SP2 and R2 SP2 ■ Windows 7 (except Home editions) ■ Windows Vista SP1 and SP2 (except Home editions) ■ Windows XP Professional SP2, SP3, and x64 SP2 ■ SUSE Linux Enterprise Server 10 SP1 and SP2 ■ SUSE Linux Enterprise Server 11 ■ Red Hat Enterprise Linux 5.2, 5.3, and 5.4 (x86 and x64)
Third-party virtual machines or system images	<ul style="list-style-type: none"> ■ Acronis True Image Echo 9.1, 9.5, and Acronis True Image 10 and 11 (Home product) (.tib). ■ Symantec Backup Exec System Recovery (formerly LiveState Recovery) 6.5, 7.0, 8.0, and 8.5, LiveState Recovery 3.0 and 6.0 (only .sv2i). ■ Norton Ghost version 10.0, 12.0, and 14.0 (.sv2i format only). ■ Parallels Desktop 2.5, 3.0, and 4.0 (.pvs and .hdd). Compressed disks are not supported. ■ Parallels Workstation 2.x (.pvs). Compressed disks are not supported. Parallels Virtuozzo Containers are not supported. ■ StorageCraft ShadowProtect Desktop, ShadowProtect Server, ShadowProtect Small Business Server (SBS), ShadowProtect IT Edition, versions 2.0, 2.5, 3.0, 3.1, and 3.2 (.spf). ■ Microsoft VHD format ■ Microsoft Virtual PC 2004 and Microsoft Virtual PC 2007 (.vnc) ■ Microsoft Virtual Server 2005 and 2005 R2 (.vnc)

Sources that run Windows 7 and Windows Server 2008 R2 can be converted to ESX 3.5 Update 5, ESX 4.0, or later destinations. ESX 3.5 Update 4 or earlier versions do not support Windows 7.

Conversion Limitations for Powered-On Machines

When you convert a powered-on machine, some conversion features might not be available for certain source operating systems.

For a list of limitations dependent on the source operating system, see [Table 2-4](#).

Table 2-4. Limitations for Powered-On Machine Conversion

Source Operating System	Limitations
Windows XP and later	Synchronization is supported only for volume-based cloning at the block level.
Linux	<ul style="list-style-type: none"> ■ Only volume-based cloning at the file level is supported. ■ Only managed destinations are supported. ■ You can convert multiboot virtual machines only if GRUB is installed as the boot loader. LILO is not supported. ■ LVM logical volumes are converted to basic volumes on the destination virtual machine.

Conversion Limitations for VMware Virtual Machines

Certain limitations exist when you convert a VMware virtual machine.

You must power off source virtual machines before you convert them. You can convert running virtual machines if you follow the procedure for converting powered-on machines.

Certain limitations are applicable when you convert Linux virtual machine sources.

- Only disk-based cloning is supported for Linux guest operating systems.
- Configuration or customization is not supported for Linux guest operating systems.
- You cannot install VMware Tools on Linux guest operating systems.

Conversion Limitations for Third-Party Virtual Machines or System Images

Converter Standalone can convert third-party virtual machines, system images, ShadowProtect images, and BackupExec System Recovery images. These conversions have limitations.

Third-Party Virtual Machines and System Images

Third-party virtual machines and system images have the following limitations.

- Virtual machines created with Macintosh versions of Virtual PC are not supported.
- The operating system on the source Virtual PC or Virtual Server virtual machine must be a Windows guest operating system supported by the destination VMware platform (for example, Workstation 5 or 6.0.x). For a list of supported operating systems, see the *Guest Operating System Installation Guide*.

Converter Standalone supports Virtual PC and Virtual Server virtual machines with most Windows operating systems earlier than Windows NT 4.0 and with non-Windows operating systems (for example, Linux and DOS) only for cloning. Converter Standalone does not support configuring for these systems.

- Parallels Virtuozzo containers are not supported.

ShadowProtect and Backup Exec System Recovery

ShadowProtect and Backup Exec System Recovery have the following limitations.

- Dynamic disks are not supported.
- All images for the backup of a machine must be in a single folder. The source folder must not contain images that are not part of the backup.
- For volume-based cloning, all volumes in the disk up to the active and system volumes must be backed up. For example, if a disk has four partitions, 1 through 4, with partition 2 as the active volume and partition 3 as the system volume, the backup must include partitions 1 through 3.
- For incremental images, up to 16 incremental backups are supported.
- ShadowProtect images of systems with logical drives are not supported if the logical drive is also a system or active volume.

Supported Destination Types

With Converter Standalone, you can create virtual machines compatible with VMware hosted and managed products.

[Table 2-5](#) shows the destinations that Converter Standalone supports.

Table 2-5. Supported Destinations

Destination Type	Supported Versions
VMware Infrastructure virtual machines	Managed destinations <ul style="list-style-type: none"> ■ ESX Server 3.5, 4.0, and 4.1 ■ ESXi 3.5, 4.0, and 4.1 ■ vCenter Server 2.5, 4.0, and 4.1
VMware Hosted virtual machines	Hosted destinations <ul style="list-style-type: none"> ■ VMware Workstation 5.x, 6.x, and 7.x ■ VMware Fusion 1.x, 2.x, and 3.0 ■ VMware Player 1.x, 2.x, and 3.0 ■ VMware Server 1.x and 2.x

NOTE For hosted destinations that reside on SMB or NFS shares, you must use volume-based cloning and create 2GB disks that are not pre-allocated.

Configuring Permissions for VirtualCenter Users

To convert virtual machines to vCenter with Converter Standalone, you must have certain vCenter permissions set at the datacenter level.

- **Datastore.Allocate Space**
- **Virtual machine.Inventory.Create new**
- **Virtual machine.Configuration.Add new disk**
- **Virtual Machine.Interaction.Power On** (needed only if you choose to power on the destination virtual machine after conversion)
- **Virtual Machine.Provisioning.Allow Disk Access**
- **Resource.Assign Virtual Machine To Resource Pool**
- **Network.Assign network** (needed only if you plan to connect the destination virtual machine to a network)

For more information about setting permissions, see the *vSphere Datacenter Administration Guide*.

Support for IPv6 in Converter Standalone

Converter Standalone supports both IPv4 and IPv6 Internet protocols with several limitations.

Internet Protocol version 6 (IPv6 or IPng) is the successor to Internet Protocol version 4 (IPv4), which is the currently used protocol for assigning IP addresses to computers on the Internet. IPv6 was adopted to overcome the expected exhaustion of IPv4 addresses that might be caused by the constantly increasing number of computers on the Internet.

While IPv4 uses 32bit addresses, IPv6 uses 128bit. IPv6 addresses can have different formats or notations.

- 1040:0:0:0:0:0:0:1
- 1040::1
- 21DA:00D3:0010:2F3B:02AA:00FF:FE28:9C5A
- [2001:0db8:85a3:08d3:1319:8a2e:0370:7344]:443

Converter Standalone supports all IPv6 notations for all components of the system.

- Converter Standalone installer
- Converter Standalone client

- Converter Standalone agent
- All destinations supported in Converter Standalone

Along with the higher security level and much larger address space, IPv6 brings about some compatibility tasks that have not been resolved yet. For example, IPv4-only nodes cannot communicate directly with IPv6 nodes and need additional routing. This makes the end-to-end support of mixed IPv4 and IPv6 environments precarious.

To reduce this complexity, Converter Standalone supports only pure IPv6 or IPv4 environments, where the protection source, the protection destination, and the Converter Standalone server and agent must run the same version of IP.

NOTE You cannot use IPv6 to customize the guest operating systems of virtual machines.

TCP/IP and UDP Port Requirements for Conversion

To enable conversion, the Converter Standalone server and client must be able to send data to each other, to remote physical machines, and to vCenter Server. Also, the source and destination hosts must receive data from each other. Designated ports are reserved for this communication.

If any of these ports is blocked, the corresponding conversion task fails.

Ports Used When Converting a Powered-On Physical Machine Running Windows

Table 2-6 contains a list of the ports that must be open during the conversion of physical machine sources running Windows.

Table 2-6. Ports Required During Windows P2V

Communication Paths	Communication Ports	Notes
Converter Standalone server to powered-on source machine	TCP - 445, 139, 9090 UDP - 137, 138	If the source computer uses NetBIOS, port 445 is not required. If NetBIOS is not being used, ports 137, 138, and 139 are not required. When in doubt, make sure that none of the ports are blocked. NOTE Unless you have installed Converter Standalone server or agent on the source computer, the account used for authentication to the source computer must have a password, network file sharing must be enabled on the source computer, and Simple File Sharing must not be used.
Converter Standalone server to vCenter Server	TCP - 443	Required only if the conversion destination is a vCenter Server.
Converter Standalone client to vCenter Server	TCP - 443	Required only if the Converter Standalone server and client components are on different machines.
Powered-on source machine to ESX/ESXi	TCP - 443, 902	If the conversion destination is vCenter Server, only port 902 is required.

Ports Used When Converting a Powered-On Physical Machine Running Linux

Table 2-7 contains a list of the ports that must be open during the conversion of physical machine sources running Linux.

Table 2-7. Ports Required During Linux P2V

Communication Paths	TCP Ports	Notes
Converter Standalone server to powered-on source machine	22	Used to establish an SSH connection between the Converter Standalone server and the source machine.
Converter Standalone client to Converter Standalone server	443	Required only if the Converter Standalone server and client components are on different machines.
Converter Standalone server to vCenter Server	443	Required only if the conversion destination is a vCenter Server.
Converter Standalone server to ESX/ESXi	443, 902, 903	If the conversion destination is a vCenter Server, only ports 902 and 903 are required.
Converter Standalone server to helper virtual machine	443	
Helper virtual machine to powered-on source machine	22	Used to establish an SSH connection between the helper virtual machine and the source machine. By default, the IP address of the helper virtual machine is assigned by DHCP. If no DHCP server is available on the destination network, you must manually assign the target virtual machine an IP address.

Ports Used When Converting Virtual Machine Sources

[Table 2-8](#) contains a list of the ports that must be open during the conversion of virtual machines.

Table 2-8. Ports Required During V2V

Communication Paths	Communication Ports	Notes
Converter Standalone server to Fileshare path	TCP - 445, 139 UPD - 137, 138	Required only for standalone virtual machine sources or destinations. If the computer hosting the source or destination path uses NetBIOS, port 445 is not required. If NetBIOS is not being used, ports 137, 138, and 139 are not required. When in doubt, make sure that none of the ports are blocked.
Converter Standalone client to Converter Standalone server	TCP - 443	Required only if the Converter Standalone server and client components are on different machines.
Converter Standalone server to vCenter Server	TCP - 443	Required only if the conversion destination is a vCenter Server.
Converter Standalone server to ESX/ESXi	TCP - 443, 902	If the conversion destination is a vCenter Server, only port 902 is required.

Requirements for Remote Hot Cloning of Windows Operating Systems

To avoid problems related to permissions and network access, ensure that simple file sharing is turned off and that Windows Firewall does not block file and printer sharing. Also, to access file and printer sharing ports, you might need to change the scope of the IP addresses that the firewall allows.

To ensure successful remote hot cloning of Windows platforms, verify the following items on the source machine before you start the application:

- Ensure that simple file sharing is turned off.
- Ensure that file and printer sharing is not blocked by Windows Firewall.

You must allow incoming file share connections in the following cases:

- When you use the machine to host standalone images
- When you use the machine as a standalone destination
- When you remotely hot clone the machine

To enable customization of the guest operating system, install Sysprep files on the machine where Converter Standalone server runs.

Ensure that Windows Firewall Does Not Block File and Printer Sharing

If Converter Standalone fails to connect to a remote Windows XP machine and issues a bad username/password error message, ensure that file and printer sharing is not blocked by Windows Firewall.

Procedure

- 1 Select **Start > Settings > Control Panel > Administrative Tools > Local Security Policy**.
- 2 In the Security Settings list on the left, select **Local Policies > Security Options**.
- 3 In the policies list on the right, select **Network access: Sharing and Security model for local accounts**.
- 4 Verify that **Classic – local users authenticate as themselves** is selected.

What to do next

For troubleshooting information about file and printer sharing, search the Microsoft TechNet Web site.

For information about setting file and printer sharing on other Windows systems, see the documentation for your system.

Turn Off Simple File Sharing on Windows XP Professional

To control permissions for individual users, you must turn off simple file sharing on the source machine.

Turning simple file sharing off does not turn off the Shared Documents feature. Use the simple file sharing UI, located in the folder's properties, to configure share and file permissions.

For Windows XP Professional operating systems that are part of a workgroup, the simple file sharing UI is turned on by default. Windows XP Professional operating systems that are part of a domain use only the classic file sharing and security interface.

Procedure

- 1 On the source machine, select **Start > Settings > Control Panel > Folder Options**.
- 2 Click the **View** tab and deselect **Use Simple File Sharing (Recommended)**.

Simple file sharing is turned off.

What to do next

For more information about turning simple file sharing on or off, see the Microsoft TechNet Web site.

Prepare Guest Operating System for Customization

To customize the guest operating system of a virtual machine that runs Windows Server 2003 or Windows XP, you must save the Sysprep files to the specified locations on the machine where Converter Standalone server runs.

If Sysprep files are missing from the server machine, the **Customize Guest OS** option is not accessible in the Converter Standalone wizards.

Prerequisites

You must download the Sysprep files that correspond to the operating system of the source machine.

Procedure

- ◆ Save the Sysprep files that correspond to the source operating system to the specified location on the machine where Converter Standalone server runs.

Option	Description
Windows Server 2003 (32bit)	The Sysprep files Location for Windows: %ALLUSERSPROFILE%\Application Data\VMware\VMware vCenter Converter Standalone\sysprep\svr2003
Windows Server 2003 (64bit)	The Sysprep files Location for Windows: %ALLUSERSPROFILE%\Application Data\VMware\VMware vCenter Converter Standalone\sysprep\svr2003-64
Windows XP (32bit)	The Sysprep files Location for Windows: %ALLUSERSPROFILE%\Application Data\VMware\VMware vCenter Converter Standalone\sysprep\xp
Windows XP (64bit)	The Sysprep files Location for Windows: %ALLUSERSPROFILE%\Application Data\VMware\VMware vCenter Converter Standalone\sysprep\xp-64

What to do next

You can now customize Windows Server 2003 (32bit and 64bit) and Windows XP (32bit and 64bit) guest operating systems by using the Conversion or the Configuration wizard.

Limitations Related to Creating Snapshots of Windows Sources

Converter Standalone uses VSS snapshots to save the state of source volumes during hot cloning of physical and virtual machines that run Windows. VSS snapshots are also used to synchronize the destination virtual machine with the source machine after the initial conversion. Some of the VSS-related issues are inherited in Converter Standalone and can prevent the proper completion of your conversion tasks.

Read the limitations listed in [Table 2-9](#) before you initiate a conversion task.

If your conversion task fails with an VSS-related error message, you can check the table for possible reasons and workarounds.

Table 2-9. VSS Snapshotting Limitations

VSS Limitations	Error Messages	Workarounds
For all operating systems that support volume-based cloning, you need at least one NTFS volume for VSS to work.		There is no workaround for this limitation.
VSS under Windows Server 2008 does not support FAT and FAT32.		Deselect all FAT and FAT32 volumes on the View/Edit Options page of the vCenter Converter wizards.
VSS under Windows Server 2008 does not support unformatted or unrecognized volumes.	Failed to create VSS snapshot of source volume. Error code :2147754764 (0x8004230C)	<ul style="list-style-type: none"> ■ Format all unformatted or unrecognized volumes and try the conversion again. ■ Deselect all unformatted or unrecognized volumes while setting up the conversion task in the Data to copy pane of the View/Edit Options page.

Table 2-9. VSS Snapshotting Limitations (Continued)

VSS Limitations	Error Messages	Workarounds
If the space in the VSS snapshot storage area is not enough for VSS to create a snapshot, the conversion fails.	Failed to create VSS snapshot of source volume. Error code: 2147754783(0x8004231F)	Clean up the source volumes, especially the system volume and all NTFS volumes, and try to convert the source again.
<p>Importing powered-on Hyper-V sources fails if the following two VSS services are not started or are not operating properly on the source machine:</p> <ul style="list-style-type: none"> ■ Microsoft Software Shadow Copy Provider Service ■ Volume Shadow Copy Service 	Failed to create VSS snapshot of source volume. Error code: 2147754758 (0x80042306)	<ol style="list-style-type: none"> 1 Set the starting mode for Microsoft Software Shadow Copy Provider Service and Volume Shadow Copy Service to Automatic. 2 Restart the source machine and try cloning it again.

Installing and Uninstalling Converter Standalone

3

You can install Converter Standalone on a physical or a virtual machine. You can also modify or repair a Converter Standalone installation.

The Local setup installs the Converter Standalone server, Converter Standalone agent, and Converter Standalone client for local use.

During the client-server installation, you can select the Converter Standalone components that you want to install on your system.

When you install the Converter Standalone server and Remote access, the local machine becomes a server for conversions, which you can manage remotely. When you install the Converter Standalone server and the Converter Standalone client, you can use the local machine to access remote Converter Standalone servers or create conversion tasks locally.

If you install only Converter Standalone client, you can connect to a remote Converter Standalone server. You can then use the remote machine to convert hosted virtual machines, managed virtual machines, or remote physical machines.

This chapter includes the following topics:

- [“Perform a Local Installation on Windows,”](#) on page 31
- [“Perform a Client-Server Installation in Windows,”](#) on page 32
- [“Perform a Command-Line Installation in Windows,”](#) on page 33
- [“Command-Line Options for Windows Installation,”](#) on page 34
- [“Modify Converter Standalone in Windows,”](#) on page 35
- [“Repair Converter Standalone in Windows,”](#) on page 36
- [“Uninstall Converter Standalone in Windows,”](#) on page 36
- [“Connect to a Remote Converter Standalone Server,”](#) on page 37

Perform a Local Installation on Windows

You can install Converter Standalone on a physical or a virtual machine. The local setup installs the Converter Standalone server, Converter Standalone agent, and Converter Standalone client for local use.

If you install Converter Standalone in local mode, you can create and manage conversion tasks only from the machine on which you installed the application.

Prerequisites

Make sure your system meets the Converter Standalone system requirements.

Make sure that you have Administrator privileges.

If you have Converter 3.0.x installed and your machine runs Windows Vista, uninstall Converter 3.0.x manually before you install Converter Standalone 4.3.

If you have an earlier version of Converter Standalone agent on the system, uninstall Converter Standalone agent.

Procedure

- 1 Download the latest version of Converter Standalone from the VMware Web site.
- 2 Navigate to the folder that contains the installer file you downloaded and double-click the `VMware-converter-4.x.x-<xxxxx>.exe` file, where `<xxxxx>` is the number of the build.
- 3 In the Choose Setup Language dialog box, select the language for the install process and click **OK**.
- 4 Follow the prompts till the End-User License Agreement page appears.
- 5 Select **I accept the terms in the License agreement** and click **Next**.
- 6 On the Destination Folder page, select the location to install Converter Standalone and click **Next**.
The default location is `C:\Program Files\VMware\VMware vCenter Converter Standalone`. To install to another location, you can click **Change** and browse for the new location.
- 7 On the Setup Type page, select **Local installation** and click **Next**.
- 8 On the Ready to Install page, click **Install**.
- 9 (Optional) On the Installation Completed page, deselect **Run Converter Standalone Client now** to complete the installation without starting the application at this time.
- 10 On the Installation Completed page, click **Finish**.

A prompt might ask you to restart your system.

Converter Standalone is installed on the local machine and is ready for use.

What to do next

You can use Converter Standalone to convert physical or virtual machine sources to virtual machine destinations.

Perform a Client-Server Installation in Windows

Perform a client-server installation so that you can create and manage conversion tasks remotely.

During the client-server installation, you can select the Converter Standalone components that you want to install on your system.

Prerequisites

Make sure your system meets the Converter Standalone system requirements.

Make sure that you have Administrator privileges.

If you have Converter 3.0.x installed and your machine runs Windows Vista, uninstall Converter 3.0.x manually before you install Converter Standalone 4.3.

If you have an earlier version of Converter Standalone agent on the system, uninstall Converter Standalone agent.

Procedure

- 1 Download the latest version of Converter Standalone from the VMware Web site.
- 2 Navigate to the folder that contains the installer file you downloaded and double-click the `VMware-converter-4.x.x-<xxxxx>.exe` file, where `<xxxxx>` is the number of the build.

- 3 In the Choose Setup Language dialog box, select the language for the install process and click **OK**.
- 4 On the Setup Type page, select **Client-Server installation (advanced)** and click **Next**.
- 5 On the Custom Setup page, select the components that you want to install and click **Next**.

Option	Description
Converter server	Converter Standalone server manages the conversion tasks. It handles the communication between the Converter Standalone clients and Converter Standalone agents. You cannot install Converter server alone. You must install Converter Standalone server together with Remote access or with the Converter Standalone client, or with both.
Remote access	If you install Remote access, local and multiple remote Converter Standalone clients can connect to the local Converter Standalone server. With remote access you can create and manage conversion tasks remotely. For remote access, you must perform a client-server installation.
Converter agent	Install Converter Standalone agent to allow the local machine to be a source machine for conversions.
Converter client	If you install only Converter Standalone client, you can connect to remote Converter Standalone server. You can then use the remote machine to convert hosted virtual machines, managed virtual machines, or remote physical machines.

When you install the Converter Standalone server and Remote access, the local machine becomes a server for conversions, which you can manage remotely. When you install the Converter Standalone server and the Converter Standalone client, you can use the local machine to access remote Converter Standalone servers or create conversion tasks locally.

- 6 (Optional) If you decided to install Remote access or Converter Standalone agent, modify the Web service ports on the Port Settings page.
 - Type the HTTPS port service number.
 - Type the HTTP port service number.
 - Type the Agent port service number.
- 7 On the Ready to Install page, click **Install**.
- 8 (Optional) If you installed the Converter Standalone client, deselect **Run Converter Standalone Client now** to complete the installation without starting the application at this time.
- 9 On the Installation Completed page, click **Finish**.

A prompt might ask you to restart your system.

The selected Converter Standalone components are installed on the local machine and are ready for use.

What to do next

You can use Converter Standalone to convert physical or virtual machine sources to virtual machine destinations.

Perform a Command-Line Installation in Windows

You can install Converter Standalone from the MS-DOS command prompt or by writing a Windows batch file (.bat) to automate the installation process.

Prerequisites

Make sure your system meets the Converter Standalone system requirements.

Make sure that you have Administrator privileges.

If you have Converter 3.0.x installed and your machine runs Windows Vista, uninstall Converter 3.0.x manually before you install Converter Standalone 4.3.

If you have an earlier version of Converter Standalone agent on the system, uninstall Converter Standalone agent.

Procedure

- 1 Download the latest version of Converter Standalone from the VMware Web site.
- 2 In the local directory to which you downloaded the installer, check the number of the build, which is a part of the installer filename.
- 3 At the command line, install Converter Standalone silently with the log file written to the temp directory.

```
VMware-converter-<build>.exe /s /v"/qn ADDLOCAL=ALL /l*v %TEMP%\vmconvservermsi.log"
```

For more command-line options, see [“Command-Line Options for Windows Installation,”](#) on page 34.

What to do next

You can use Converter Standalone to convert physical or virtual machine sources to virtual machine destinations.

Command-Line Options for Windows Installation

You can use the command-line installation options when you install Converter Standalone from the MS-DOS command prompt in Windows or by writing a Windows batch file (.bat).

For a list of options to perform command-line installation, see [Table 3-1](#).

Table 3-1. Command-Line Options

Option	Action
/s	Does not display the Windows Installer version check.
/v" <params>"	Passes parameters to the <code>msiexec.exe</code> file.
/qn	Runs the <code>msi</code> command in silent mode.
/qb	Runs the <code>msi</code> command in basic mode.
/qf	Runs the <code>msi</code> command in full mode.
/l*v <Logfile>	Records login information in the file provided in <Logfile>.
/x	Uninstalls VMware vCenter Converter Standalone.
ADDLOCAL="ALL"	Installs full package. The parameter is case-sensitive.
PROPERTY=<property value>	Sets the value of a property to <property value>.
VMCE_HTTP_PORT	Sets the HTTP port. The default is 80. Remote machines connect to the server through this port to download the Converter Standalone client.
VMCE_HTTPS_PORT	Set the HTTPS port. The default is 443. Remote Converter Standalone clients connect to this port on the server and submit conversion tasks.
VMCE_AGENT_PORT	Sets an Agent port. The default is 9089. Remote Converter Standalone servers connect to this port to convert this machine.

Modify Converter Standalone in Windows

To change the installed Converter Standalone agent or the communication ports for the Converter Standalone components, you must modify the Converter Standalone installation.

Prerequisites

Make sure that you have Administrator privileges.

Close the Converter Standalone application before you start the installer wizard.

Procedure

- 1 To start the Converter Standalone installer, do one of the following:
 - Go to the folder that contains the installer file and double-click the `VMware-converter-4.x.x-
<xxxx>.exe` file, where `<xxxx>` is the number of the build. Check the number of the build to see if it matches the build you installed.
 - Select **Add or Remove Programs** from the Control Panel, select Converter Standalone from the list, and click **Change**.
- 2 On the Welcome page of the installer wizard, click **Next**.
- 3 On the Program Maintenance page, select **Modify** and click **Next**.
- 4 On the Custom Setup page, select the components that you want to install and click **Next**.

Option	Description
Converter server	Converter Standalone server manages the conversion tasks. It handles the communication between the Converter Standalone clients and Converter Standalone agents. You cannot install Converter server alone. You must install Converter Standalone server together with Remote access or with the Converter Standalone client, or with both.
Remote access	If you install Remote access, local and multiple remote Converter Standalone clients can connect to the local Converter Standalone server. With remote access you can create and manage conversion tasks remotely. For remote access, you must perform a client-server installation.
Converter agent	Install Converter Standalone agent to allow the local machine to be a source machine for conversions.
Converter client	If you install only Converter Standalone client, you can connect to remote Converter Standalone server. You can then use the remote machine to convert hosted virtual machines, managed virtual machines, or remote physical machines.

When you install the Converter Standalone server and Remote access, the local machine becomes a server for conversions, which you can manage remotely. When you install the Converter Standalone server and the Converter Standalone client, you can use the local machine to access remote Converter Standalone servers or create conversion tasks locally.

- 5 (Optional) If you decided to install Remote access or Converter Standalone agent, modify the Web service ports on the Port Settings page.
 - Type the HTTPS port service number.
 - Type the HTTP port service number.
 - Type the Agent port service number.
- 6 On the Ready to Modify page, click **Install**.

- 7 (Optional) If you installed the Converter Standalone client, deselect **Run Converter Standalone Client now** to complete the installation without starting the application at this time.
- 8 On the Installation Completed page, click **Finish**.

A prompt might ask you to restart your system.

The selected Converter Standalone components are installed on the local machine and are ready for use.

What to do next

You can use Converter Standalone to convert physical or virtual machine sources to virtual machine destinations.

Repair Converter Standalone in Windows

You can repair the Converter Standalone installation to check for and reinstall the Converter Standalone client or Converter Standalone agent.

Prerequisites

Make sure that you have Administrator privileges.

Close the Converter Standalone application before you start the installer wizard.

Procedure

- 1 To start the Converter Standalone installer, do one of the following:
 - Go to the folder that contains the installer file and double-click the `VMware-converter-4.x.x-<xxxx>.exe` file, where `<xxxx>` is the number of the build. Check the number of the build to see if it matches the build you installed.
 - Select **Add or Remove Programs** from the Control Panel, select Converter Standalone from the list, and click **Change**.
- 2 On the Welcome page of the installer wizard, click **Next**.
- 3 On the Program Maintenance page, select **Repair** and click **Next**.
- 4 On the Ready to Repair page, click **Install**.
- 5 On the Installation Completed page, click **Finish**.

A prompt might ask you to restart your system.

What to do next

You can use Converter Standalone to convert physical or virtual machine sources to virtual machine destinations.

Uninstall Converter Standalone in Windows

You can uninstall Converter Standalone by using the Microsoft Windows Add or Remove Programs utility from the Control Panel or by using the VMware vCenter Converter Standalone installer wizard.

Prerequisites

Make sure that you have Administrator privileges.

Close the Converter Standalone application before you start the installer wizard.

Procedure

- 1 To start the Converter Standalone installer, do one of the following:
 - Go to the folder that contains the installer file and double-click the `VMware-converter-4.x.x-<xxxx>.exe` file, where `<xxxx>` is the number of the build. Check the number of the build to see if it matches the build you installed.
 - Select **Add or Remove Programs** from the Control Panel, select Converter Standalone from the list, and click **Change**.
 - 2 On the Welcome page of the installer wizard, click **Next**.
 - 3 On the Program Maintenance page, select **Remove** and click **Next**.
 - 4 On the Ready to Remove page, click **Remove**.
 - 5 On the Installation Completed page, click **Finish**.
- A prompt might ask you to restart your system.

Connect to a Remote Converter Standalone Server

You can use the Converter Standalone client to connect to a Converter Standalone server installed on a remote machine.

Prerequisites

Ensure that the Converter Standalone server and agent are installed on the remote machine.

Procedure

- 1 Start Converter Standalone.
- 2 Follow the procedure that is applicable for your installation type.

Option	Action
Local installation	a Select Administration > Connect to another server .
	b On the Converter Standalone login page, select Enter the IP address or host name of the Converter Standalone server .
	c Provide the IP address and Administrator credentials, and click Login .
Client-server installation with remote access	a On the Converter Standalone login page, select Enter the IP address or host name of the Converter Standalone server .
	b Provide the IP address and Administrator credentials, and click Login .

What to do next

You can now use the remote Converter Standalone server to set up and manage conversion tasks.

Convert a Physical or Virtual Machine

You can create a conversion task to convert a physical or virtual machine to a variety of destinations. You can convert physical machines, VMware virtual machines, third-party backup images and virtual machines, and Hyper-V Server virtual machines into VMware standalone virtual machines or virtual machines that vCenter Server manages.

The approach you take for creating the conversion task is determined by the type of source and the type of destination that you select.

Source type

A powered-on physical or virtual machine, a VMware Infrastructure virtual machine running on an ESX host, or a standalone virtual machine.

Standalone virtual machines include VMware virtual machines, backup images, and third-party virtual machines such as VMware Workstation, VMware Server, Acronis True Image, Microsoft Virtual PC and Virtual Server, Symantec Backup Exec Server Recovery (formerly known as LiveState Recovery), LiveState Recovery, StorageCraft, Parallels Desktop for Microsoft Windows and Mac OS, Parallels Workstation, and Norton Ghost (only .sv2i) images.

[“Supported Source Types,”](#) on page 21 contains a full list of supported source types and product versions.

Destination type

ESX host, ESX host that vCenter Server manages, or a VMware standalone virtual machine.

[“Supported Destination Types,”](#) on page 23 contains a full list of supported destination types and product versions.

Procedure

- 1 [Start the Wizard for a Conversion](#) on page 40
The Conversion wizard guides you through the steps of creating a conversion task.
- 2 [Select a Source Machine to Convert](#) on page 40
You can select from several source options for the type of machine to convert.
- 3 [Select a Destination for the New Virtual Machine](#) on page 46
When you set up a conversion task, you must select a destination for the new virtual machine.
- 4 [Configure the Hardware of the Destination Virtual Machine](#) on page 49
You can configure the virtual hardware resources that the destination virtual machine uses.
- 5 [Configure the Software on the Destination Virtual Machine](#) on page 60
You can configure the guest operating system so that it is ready to operate in a virtual environment.

6 [Configure the Conversion Task](#) on page 65

You can configure the conversion process and select the behavior of the source and destination machine during and after conversion. You can change the status of the source and destination services only when the source machine is running a Windows operating system.

7 [Review the Summary and Submit the Conversion Task](#) on page 71

On the Summary page, you can view a summary of the conversion task before you add it to the task list.

Start the Wizard for a Conversion

The Conversion wizard guides you through the steps of creating a conversion task.

Procedure

- 1 Start the Converter Standalone application.
- 2 Click **Convert Machine** in the application menu.

The Conversion wizard opens on the Source System page.

What to do next

You can now select the source machine type to convert.

Select a Source Machine to Convert

You can select from several source options for the type of machine to convert.

Prerequisites

Before you select a source machine to convert, verify that it is listed in the list of supported source types. See [“Supported Source Types,”](#) on page 21.

■ [Select a Powered-On Windows Machine to Convert](#) on page 41

You can select a running (powered-on) Windows machine to convert. The source machine can be physical or virtual.

■ [Select a Powered-On Linux Machine to Convert](#) on page 42

You can select a powered-on Linux machine to convert. The source machine can be a physical or virtual machine.

■ [Select an ESX/ESXi or vCenter Server Virtual Machine to Convert](#) on page 42

You can convert a powered-off virtual machine that is located on an ESX/ESXi host, or on an ESX/ESXi host managed by vCenter Server.

■ [Select a VMware Hosted Virtual Machine to Convert](#) on page 44

You can convert a virtual machine created or used in a VMware hosted product, such as VMware Workstation, VMware Player, VMware Fusion, and VMware Server.

■ [Select a Backup Image or a Third-Party Virtual Machine to Convert](#) on page 44

You can select a backup image or a third-party virtual machine as the conversion source.

■ [Select a Hyper-V Server Virtual Machine to Convert](#) on page 45

You can convert virtual machines that Hyper-V Server manages.

Select a Powered-On Windows Machine to Convert

You can select a running (powered-on) Windows machine to convert. The source machine can be physical or virtual.

Prerequisites

Before you continue, you must prepare the source Windows machine for conversion.

- Make sure that the Windows version installed on the powered-on machine is supported. For a list of supported operating systems, see [“Supported Operating Systems,”](#) on page 19.
- Make sure that the Converter Standalone server machine has network access to the Windows source machine.
- Turn off firewall applications running on the source machine.
- Disable file sharing on the source Windows machine.
- Make sure that no other conversion task is using the source you select.
- Manually remove any VMware Converter 3.x installations from the source machine.
- If you plan to convert a powered-on machine by using IPv6, ensure that Converter Standalone server is installed on Windows Vista, Windows 2008, or Windows 7 operating system.

Procedure

- 1 On the Source System page of the Conversion wizard, select **Powered-on machine** from the **Select source type** drop-down menu.
- 2 Select an option that corresponds to your source machine location.

Source Location	Action
Local	Click This local machine . For local machines, the authorization is set to the current user and cannot be changed. If remote access is enabled during Converter Standalone installation, this local machine is treated as a remote physical machine.
Remote	<ol style="list-style-type: none"> a Click A remote machine. b Provide the IP address or name of the machine and administrator credentials. c Select the operating system type from the OS Family drop-down menu.

- 3 (Optional) Click **View source details** to see hardware and software information about the source machine.
- 4 Click **Next**.
If Converter Standalone agent is not already installed on the source machine, a dialog box appears. In it, you confirm the installation and select an uninstallation method for Converter Standalone agent.
- 5 (Optional) Select the uninstallation procedure for Converter Standalone agent and click **Yes**.
Converter Standalone agent is installed on the source machine.

Converter Standalone agent prepares the source machine for conversion.

What to do next

On the Destination System page you can select the destination type for the new virtual machine.

Select a Powered-On Linux Machine to Convert

You can select a powered-on Linux machine to convert. The source machine can be a physical or virtual machine.

You can convert powered-on machines that run Linux only if GRUB is installed as the boot loader on the source. LILO boot loader is not supported.

Prerequisites

Before you continue, you must prepare the source machine for conversion.

- Enable SSH on the source Linux machine.
- Make sure that you use the root account to convert a Linux powered-on machine.
- Make sure that vCenter Converter server machine has network access to the Linux source machine.
- Make sure that no other conversion task is using the source you select.
- To be able to convert multiboot virtual machines, make sure to install GRUB as the boot loader. LILO is not supported.

Procedure

- 1 On the Source System page of the Conversion wizard, select **Powered-on machine** from the **Select source type** drop-down menu.
- 2 Provide the IP address or DNS name and root credentials for the Linux machine you want to convert.
- 3 From the **OS Family** drop-down menu, select **Linux**.
- 4 Click **Next**.

Converter Standalone connects to the powered-on Linux machine and prepares it for conversion.

What to do next

On the Destination System page you can select the destination type for the new virtual machine.

Select an ESX/ESXi or vCenter Server Virtual Machine to Convert

You can convert a powered-off virtual machine that is located on an ESX/ESXi host, or on an ESX/ESXi host managed by vCenter Server.

You cannot convert a running or suspended virtual machine by using this procedure. For powered-on virtual machines, use the procedures for powered-on source machines.

If you connect to a vCenter Server that is part of an environment that contains multiple vCenter Server instances, Converter Standalone displays only ESX hosts managed directly by the currently connected vCenter Server.

Prerequisites

If the source machine that you want to convert resides on a VMware DRS cluster that vCenter Server manages, set VMware DRS Power Management (DPM) to manual so that DPM does not power off the ESX hosts used by Converter Standalone. When the conversion process completes, restore DPM to its original settings. For information about how to change DPM settings, see the *Resource Management Guide*.

Power off the source machine before the conversion.

Procedure

- 1 On the Source System page of the Conversion wizard, select **VMware Infrastructure virtual machine** from the **Select source type** drop-down menu.
- 2 Provide the IP address or host name and credentials for authentication with the ESX host or the vCenter Server, and click **Next**.

The Source Machine page appears, displaying the host name or IP address and the inventory of the ESX host or the vCenter Server.

What to do next

On the Source Machine page of the Conversion wizard, you can browse the virtual infrastructure inventory and select the virtual machine to convert.

Specify the vCenter Server Virtual Machine to Convert

If you choose to convert a virtual machine managed by a vCenter Server or ESX host, you must browse the inventory to locate the source virtual machine.

Prerequisites

On the Source System page of the Conversion wizard, select **VMware Infrastructure virtual machine** as the conversion source and click **Next** to proceed to the Source Machine page.

Procedure

- 1 (Optional) If you are connected to a vCenter Server, select a virtual machine view from the **Specify machine with** drop-down menu.

Option	Description
Hosts and Clusters	The Inventory tree pane provides a view of hosts, clusters, resource pools, and vApps. If you select a host managed by a cluster, you see the full list of virtual machines and templates in the VM list view. If you select a standalone host or a cluster, you see only the virtual machines that are not deployed in the resource pools of that host or cluster.
VMs and Templates	The Inventory tree pane provides a view of datacenters and VM folders.

- 2 (Optional) If you are connected to a vCenter Server, select an object from the Inventory tree pane.

Option	Description
Hosts and Clusters	Select cluster, ESX host, resource pool, or vApp.
VMs and Templates	Select datacenter or VM folder.

- 3 From the virtual machines list, select the virtual machine you want to convert.

You can search for virtual machines in the VM list by typing one or more letters of their names in the **Search for name with** text box. You can clear your search by clicking **Clear**.

NOTE If you connect to a vCenter Server that has a disconnected ESX instance (powered off, connected to another vCenter Server, or in maintenance mode), you cannot select a virtual machine from that ESX host.

- 4 (Optional) To refresh the Inventory, click **Refresh**.
- 5 (Optional) To view more details about a machine, select it and click **View source details**.
- 6 Click **Next** to proceed to the Destination System page.

What to do next

On the Destination System page you can select the destination type for the new virtual machine.

Select a VMware Hosted Virtual Machine to Convert

You can convert a virtual machine created or used in a VMware hosted product, such as VMware Workstation, VMware Player, VMware Fusion, and VMware Server.

Prerequisites

Verify that your source machine is a supported VMware Desktop products virtual machine “[Supported Source Types](#),” on page 21.

If you plan to use a network path to locate the source, verify that the machine where Converter Standalone server runs has access to that network path.

Power off the source machine before the conversion.

Procedure

- 1 On the Source System page of the Conversion wizard, select **VMware Workstation or other VMware virtual machine** from the **Select source type** drop-down menu.
- 2 Locate the virtual machine source.
 - If you are connected to a remote Converter Standalone server, provide a network path to the source virtual machine file (.vmx) in the **Virtual machine file** text box. For example, \\server\virtual_machines\virtual_machine.vmx.
 - If you are connected to a local Converter Standalone server, provide a network path or a local path to the .vmx file.

The file type choices are limited to VMware Workstation *.vmx files.
- 3 If you are connected to a remote Converter Standalone server, enter user credentials for accessing the source virtual machine.

You do not have to provide user credentials if you are connected to a local Converter Standalone server. In such cases, Converter Standalone uses the Windows credentials to connect to the source machine.
- 4 (Optional) To view more information about the selected source, click **View source details**
- 5 Click **Next** to proceed to the Destination System page.

What to do next

On the Destination System page you can select the destination type for the new virtual machine.

Select a Backup Image or a Third-Party Virtual Machine to Convert

You can select a backup image or a third-party virtual machine as the conversion source.

Prerequisites

Verify that your machine is a supported backup image or third-party virtual machine here “[Supported Source Types](#),” on page 21.

If you plan to use a network path to locate the source, verify that the machine where Converter Standalone server runs has access to that network path.

Power off the source machine before the conversion.

Procedure

- 1 On the Source System page, select **Backup image or third-party virtual machine** from the **Select source type** drop-down menu.
- 2 Locate the source backup image or virtual machine file.
 - If you are connected to a remote Converter Standalone server, provide a valid network path to the source backup image or virtual machine file in the **Virtual machine file** text box. For example, `\server\backup_images\backup_image.pvs`.
 - If you are connected to a local Converter Standalone server, provide a network path or a local path to the source backup image or virtual machine file.
- 3 If you are connected to a remote Converter Standalone server, enter user credentials for accessing the source virtual machine.

You do not have to provide user credentials if you are connected to a local Converter Standalone server. In such cases, Converter Standalone uses the Windows credentials to connect to the source machine.
- 4 (Optional) To view more information about the selected source, click **View source details**
- 5 Click **Next** to proceed to the Destination System page.

What to do next

On the Destination System page you can select the destination type for the new virtual machine.

Select a Hyper-V Server Virtual Machine to Convert

You can convert virtual machines that Hyper-V Server manages.

Prerequisites

Power off the source Hyper-V virtual machine.

Procedure

- 1 On the Source System page, select **Hyper-V Server** from the **Select source type** drop-down menu.
- 2 Provide the IP address or DNS name and administrative credentials to authenticate with the Hyper-V Server and click **Next**.

If Converter Standalone agent is not already installed on the Hyper-V Server, a dialog box appears. In it, you confirm the installation of Converter Standalone agent.
- 3 (Optional) Select an uninstallation procedure for Converter Standalone agent and click **Yes**.

Converter Standalone agent is installed on the source Hyper-V Server.

What to do next

On the Source Machine page, browse the Hyper-V Server inventory to locate the source virtual machine to convert.

Specify the Hyper-V Server Virtual Machine to Convert

If you choose to convert a virtual machine managed by a Hyper-V Server, you must browse the inventory to locate the source virtual machine.

Prerequisites

On the Source System page, select **Hyper-V Server** as the source type and navigate to the Source Machine page.

Procedure

- 1 On the Source Machine page, select the virtual machine you want to convert.

You can search for virtual machines in the inventory by typing one or more letters of their names in the **Search for name with** text box. You can clear your search by clicking **Clear**.

NOTE You can select only powered-off virtual machines. To convert a running machine, select a powered-on machine. To convert a suspended machine, either power it off and use the current procedure, or power it on and select a powered-on machine as the source.

- 2 (Optional) To refresh the inventory, click **Refresh**.
- 3 (Optional) To view more details about the virtual machine to convert, click **View source details**.
- 4 Click **Next** to proceed to the Destination System page.

The Converter Standalone agent prepares the Hyper-V source machine for conversion.

What to do next

On the Destination System page you can select the destination type for the new virtual machine.

Select a Destination for the New Virtual Machine

When you set up a conversion task, you must select a destination for the new virtual machine.

When you use a VMware DRS cluster as the destination, set VMware DRS Power Management (DPM) to manual. This setting ensures that DPM does not power off the ESX hosts that Converter Standalone uses. When the conversion process completes, restore DPM to its original settings. For information about how to change DPM settings, see the *Resource Management Guide*.

NOTE For conversions of powered-on source machines that run Linux, the only supported destination is a VMware Infrastructure destination.

Select a Managed Destination

You can convert a virtual machine to use with ESX/ESXi or with an ESX/ESXi host that vCenter Server manages.

Procedure

- 1 On the Destination System page, select **VMware Infrastructure virtual machine** from the **Select destination type** drop-down menu.
- 2 Provide the IP address or host name and credentials for authentication with the ESX host or the vCenter Server.
- 3 Click **Next** to proceed to the Destination Virtual Machine page.

What to do next

On the Destination Virtual Machine page, you can specify the name of the destination virtual machine and select the folder in which it should reside.

Name the Destination Virtual Machine and Select a Folder

For VMware Infrastructure destinations, you can select the destination folder and rename the destination virtual machine.

If you connect to an ESX host directly, you can view only the list of virtual machines. Therefore, you cannot select a destination folder.

Prerequisites

On the Destination System page of the Conversion wizard, select **VMware Infrastructure virtual machine** as the destination type.

Procedure

- 1 On the Destination Virtual Machine page, select the datacenter to accommodate the destination virtual machine.

If you use folders in your virtual environment to manage groups of virtual machines, you can select a folder to accommodate the destination virtual machine.

- 2 In the **Name** text box, enter a name for the destination virtual machine.

By default, Converter Standalone assigns the source machine name in this text box.

NOTE Search the list of virtual machines in the datacenter or folder you selected to ensure that the name you assign to the destination virtual machine does not exist. Virtual machines are filtered as you type. You can clear your search by clicking **Clear**.

- 3 (Optional) To refresh the Inventory, click **Refresh**.
- 4 Click **Next** to proceed to the Destination Location page.

What to do next

On the Destination Location page you can modify the destination environment for the new virtual machine. This includes selecting a host, resource pool, or cluster to accommodate the destination virtual machine, selecting the Datastore to hold the files of the destination virtual machine, and selecting the virtual hardware version to install on the destination virtual machine.

Customize the Location of the Destination Virtual Machine

For VMware Infrastructure destinations, you can select an ESX host, a resource pool, or a cluster. You can also select a datastore and the virtual hardware version to be installed on the destination.

Prerequisites

On the Destination Virtual Machine page, name the destination virtual machine. If you selected a vCenter Server destination, select the destination folder.

Procedure

- 1 On the Destination Location page of the Conversion wizard, select a datacenter object from the inventory to accommodate the destination virtual machine.
 - Select an ESX host.
 - Select a resource pool.
 - Select a cluster.

If DRS on the selected cluster is not set to automated mode, you can select an ESX host that belongs to the selected cluster from the **Host** drop-down menu.
- 2 (Optional) From the **Datastore** drop-down menu, select the datastore to hold the destination virtual machine files.

- 3 (Optional) From the **Virtual machine version** drop-down menu, select the virtual hardware version for the destination virtual machine.

Option	Description
Version 4	Select when the destination host is ESX 3.x.
Version 7	Select for the latest virtual machine features. This hardware version is not supported for ESX 3.x versions.

- 4 Click **Next** to proceed to the Options page.

What to do next

On the Options page you can set up the parameters of the conversion task. These settings include data layout, network settings, guest operating system customization, and others.

Select a Hosted Destination

You can convert a virtual machine for use with VMware Workstation, VMware Fusion, VMware Server, or VMware Player.

Prerequisites

If you plan to use a network path to locate the destination, verify that you have access to that network path.

- For powered-on machines or Hyper-V virtual machine sources, verify that the machine where Converter Standalone agent runs has access to that network path.
- For all other source types, verify that the machine where Converter Standalone server runs has access to that network path.

Procedure

- 1 On the Destination System page, select **VMware Workstation or other VMware virtual machine** from the **Select destination type** drop-down menu.
- 2 Select the destination VMware hosted product from the **Select VMware product** drop-down menu.
- 3 Provide a name for the destination virtual machine in the **Name** text box.
- 4 Specify the location to store the destination virtual machine files.
 - If you are connected to a remote Converter Standalone server, provide a network path to the destination directory. For example, \\server\virtual_machines\.
 - If you are connected to a local Converter Standalone server, provide a network path or a local path to the destination directory.
- 5 (Optional) If the destination directory is password-protected, provide valid user credentials.

You do not have to provide user credentials if the destination location is on the local storage of the machine where Converter Standalone server runs.
- 6 Click **Next** to proceed to the Options page.

What to do next

On the Options page you can set up the parameters of the conversion task. These settings include data layout, network settings, guest operating system customization, and others.

Configure the Hardware of the Destination Virtual Machine

You can configure the virtual hardware resources that the destination virtual machine uses.

- [Organize the Data to Copy on the Destination Machine](#) on page 49
Depending on the selected source and destination, you can either select between disk-based and volume-based cloning modes, or create linked clones. For the conversion task, you can copy all disks to the destination or select the volumes to be copied or to be excluded. For destinations with multiple datastores, you can select the data location on specific datastores in your virtual environment.
- [Edit the Number of Processors](#) on page 57
You can change the number of processors that the destination virtual machine uses.
- [Allocate Memory for the Destination Virtual Machine](#) on page 58
You can change the amount of memory allocated to the destination virtual machine.
- [Specify a Disk Controller for the Destination Virtual Machine](#) on page 58
You can select a disk controller type for the destination virtual disks.
- [Configure the Network Settings of the Destination Virtual Machine](#) on page 59
You can change the number of network adapters and select the network that the destination virtual machine uses. You can also set network adapters to connect to the network when the destination virtual machine powers on.
- [Configure the Network for the Helper Virtual Machine](#) on page 60
When you convert a powered-on Linux machine, Converter Standalone creates a Helper virtual machine on the destination. The Helper virtual machine needs network access to the source machine to clone the source files. Default conversion settings enforce automatic acquisition of an IPv4 address and a DNS server for the Helper virtual machine, but you can set up this network connection manually.

Organize the Data to Copy on the Destination Machine

Depending on the selected source and destination, you can either select between disk-based and volume-based cloning modes, or create linked clones. For the conversion task, you can copy all disks to the destination or select the volumes to be copied or to be excluded. For destinations with multiple datastores, you can select the data location on specific datastores in your virtual environment.

IMPORTANT Converter Standalone cannot detect any source volumes and file systems that are located on physical disks larger than 2TB.

Prerequisites

On the Options page of the Conversion wizard, click **Data to copy** in the options list.

Procedure

- ◆ In the Data to copy pane, select a copy mode from the **Data copy type** drop-down menu.

Option	Description
Copy all disks and maintain layout	Results in disk-based cloning. You can preserve the source disk layout in the destination virtual machine. This option is not available for physical machine sources.
Select volumes to copy	Results in volume-based cloning. You can select the volumes to be copied to the destination virtual machine. You can also resize and reorganize the volume layout. This option is available for powered-on source machines that run Windows and Linux, and for all other supported sources that run Windows.
Linked clone	A linked clone allows you to create a VMware virtual machine that shares the virtual disk of the source machine or system image. This option is available for hosted sources and hosted destinations.

Depending on the destination you select, several destination disk types are available. To support destination virtual disks on FAT file systems, divide the source data into 2GB files. For detailed information on destination virtual disks types, see [“Destination Disk Types,”](#) on page 16.

Resize a Volume

To manage disk space on the destination datastore, you can resize the disk volumes before you begin the conversion.

Prerequisites

On the Options page of the Conversion wizard, click **Data to copy** in the options list.

Procedure

- 1 From the **Data copy type** drop-down menu, select **Select volumes to copy**.
- 2 In the Destination size column, select an option to specify the size of a destination volume.

Option	Description
Maintain size	Maintains the original source volume size.
Min size	Copies only the used space of the source volume.
Type size in GB	Allows you to type a custom size in GB for the destination volume. The value cannot be smaller than the used space on the source volume, but can be larger than the total size of the source volume. The maximum allowed disk size for the destination is 999GB.
Type size in MB	Allows you to type a custom size in MB for the destination volume. The value cannot be smaller than the used space on the source volume, but can be larger than the total size of the source volume. The maximum allowed disk size for the destination is 999GB.

- 3 Save your settings.

Option	Description
Select another option from the options list	Saves your settings and displays the pane for the selected option.
Click Next	Saves your settings and displays the next page of the Conversion wizard. <ul style="list-style-type: none"> ■ The Customizations page is displayed if you select Customize guest preferences for the virtual machine in the Advanced options pane. ■ The Summary page is displayed if you do not select Customize guest preferences for the virtual machine in the Advanced options pane.

Exclude a Source Volume from the Conversion Process

You can choose not to copy a volume from the source machine to the destination virtual machine. During the conversion process, Converter Standalone ignores the deselected volumes and copies only the volumes that are selected.

The source virtual machine must have more than one volume to be able to deselect existing volumes.

You cannot delete the system volume from the destination virtual machine. For example, if C: is the volume that contains the Windows operating system installation, you cannot remove it from the destination virtual machine.

Prerequisites

On the Options page of the Conversion wizard, click **Data to copy** in the options list.

Procedure

- 1 From the **Data copy type** drop-down menu, select **Select volumes to copy**.
- 2 Deselect the volumes that you do not want to copy to the destination virtual machine.
- 3 Save your settings.

Option	Description
Select another option from the options list	Saves your settings and displays the pane for the selected option.
Click Next	Saves your settings and displays the next page of the Conversion wizard. <ul style="list-style-type: none"> ■ The Customizations page is displayed if you select Customize guest preferences for the virtual machine in the Advanced options pane. ■ The Summary page is displayed if you do not select Customize guest preferences for the virtual machine in the Advanced options pane.

The deselected volumes are ignored during the conversion process and do not appear on the destination virtual machine.

Move a Volume to a Different Virtual Disk

You can add virtual disks to the destination virtual machine and move source volumes in the new disks.

The number of virtual disks you can create depends on the number of volumes that exist on the source virtual machine. For example, if you have only one volume on the source virtual machine, you cannot add a virtual disk to the destination virtual machine.

You cannot move the system volume where the guest operating system is installed. For example, if your Windows operating system is installed on C:, you cannot move the C: volume.

Prerequisites

On the Options page of the Conversion wizard, click **Data to copy** in the options list.

Procedure

- 1 From the **Data copy type** drop-down menu, select **Select volumes to copy**.
- 2 Click **Advanced** and select the **Destination layout** tab.

- 3 Select a volume from the list and click **Add disk**.

A new virtual disk appears in the Destination layout column.

- 4 Select a source volume and use the **Move up** and **Move down** buttons to accommodate the volume in the new virtual disk.

If you leave the new virtual disk empty, Converter Standalone does not create the new virtual disk on the destination virtual machine.

The selected source volume is copied to a new virtual disk on the destination virtual machine.

Select the Destination Datastore for a Source Volume

You can store a disk volume in a datastore different from the one that accommodates the virtual machine configuration file (.vmtx).

You can select the destination datastore for a volume only for managed destinations with more than one datastore.

Prerequisites

On the Options page of the Conversion wizard, click **Data to copy** in the options list.

Procedure

- 1 From the **Data copy type** drop-down menu, select **Select volumes to copy**.

- 2 Click **Advanced** and select the **Destination layout** tab.

- 3 Select a volume from the list and click **Add disk**.

A new virtual disk appears in the Destination layout column.

- 4 Select a source volume and use the **Move up** and **Move down** buttons to accommodate the volume in the new virtual disk.

If you leave the new virtual disk empty, Converter Standalone does not create the new virtual disk on the destination virtual machine.

- 5 Highlight the new virtual disk and select a different datastore from the **Destination datastore** drop-down menu.

- 6 Save your settings.

Option	Description
Select another option from the options list	Saves your settings and displays the pane for the selected option.
Click Next	Saves your settings and displays the next page of the Conversion wizard. <ul style="list-style-type: none"> ■ The Customizations page is displayed if you select Customize guest preferences for the virtual machine in the Advanced options pane. ■ The Summary page is displayed if you do not select Customize guest preferences for the virtual machine in the Advanced options pane.

The virtual disk file (.vmdk) that contains the volume is stored in the selected datastore.

Add a Virtual Disk

You can add a virtual disk to the destination virtual machine.

The number of virtual disks depends on the number of volumes that exist on the source virtual machine. For example, if you have only one volume on the source virtual machine, you cannot add a virtual disk to the destination virtual machine.

Prerequisites

You must have more than one volumes on the source machine to be able to add an additional virtual disk.

On the Options page of the Conversion wizard, click **Data to copy** in the options list.

Procedure

- 1 From the **Data copy type** drop-down menu, select **Select volumes to copy**.
- 2 Click **Advanced** and select the **Destination layout** tab.
- 3 Select a volume from the list and click **Add disk**.

A virtual disk is added to the destination disk layout.

- 4 Select a source volume and use the **Move up** and **Move down** buttons to accommodate the volume in the new virtual disk.

If you leave the new virtual disk empty, Converter Standalone does not create the new virtual disk on the destination virtual machine.

- 5 Save your settings.

Option	Description
Select another option from the options list	Saves your settings and displays the pane for the selected option.
Click Next	<p>Saves your settings and displays the next page of the Conversion wizard.</p> <ul style="list-style-type: none"> ■ The Customizations page is displayed if you select Customize guest preferences for the virtual machine in the Advanced options pane. ■ The Summary page is displayed if you do not select Customize guest preferences for the virtual machine in the Advanced options pane.

The new virtual disk is created on the destination datastore.

Move a Disk to a Different Datastore

You can use disk-based cloning to select a different datastore for a destination virtual disk.

Prerequisites

On the Options page of the Conversion wizard, click **Data to copy** in the options list.

You can change the destination datastore for a disk only for managed destinations with more than one datastore.

Procedure

- 1 From the **Data copy type** drop-down menu, select **Copy all disks and maintain layout**.
- 2 Click the name of the virtual disk to relocate and select a different datastore from the **Destination datastore** drop-down menu.
- 3 Save your settings.

Option	Description
Select another option from the options list	Saves your settings and displays the pane for the selected option.
Click Next	Saves your settings and displays the next page of the Conversion wizard. <ul style="list-style-type: none"> ■ The Customizations page is displayed if you select Customize guest preferences for the virtual machine in the Advanced options pane. ■ The Summary page is displayed if you do not select Customize guest preferences for the virtual machine in the Advanced options pane.

The virtual disk file (.vmdk) is stored in the selected datastore.

Create an Expandable Disk on a Managed Destination

To save space on the destination datastore, you can copy only the existing data from a source virtual disk and create an expandable disk on the destination. Later, as you use the destination virtual machine and write new data, the destination virtual disk grows.

You can create expandable disks on managed destinations that support thin provisioning through their GUI.

You can create an expandable disk by using volume-based or disk-based cloning.

Prerequisites

On the Options page of the Conversion wizard, click **Data to copy** in the options list.

Procedure

- Use disk-based cloning to create an expandable disk.
 - a From the **Data copy type** drop-down menu, select **Copy all disks and maintain layout**.
 - b Click a virtual disk and select **Thin** from the **Type** drop-down menu.
 - c To apply your settings, select another option from the options list or click **Next**.
- Use volume-based cloning to create an expandable disk.
 - a From the **Data copy type** drop-down menu, select **Select volumes to copy** and click **Advanced**.
 - b Select the **Destination layout** tab, click a virtual disk, and select **Thin** from the **Type** drop-down menu.
 - c To apply your settings, select another option from the options list or click **Next**.

Converter Standalone copies only the existing data to the destination datastore. The empty disk space from the virtual disk is not copied to the datastore. As you use the destination virtual machine and write new data to the disk, the size of the destination disk grows.

Create an Expandable Disk on a Hosted Destination

To save space on the destination, you can copy only the existing data from a source virtual disk. Later, as you use the destination virtual machine and write new data, the destination virtual disk grows.

You can create an expandable disk by using volume-based or disk-based cloning.

Prerequisites

You must select a hosted destination, such as VMware Workstation, to use the **Not pre-allocated** disk option. On the Options page of the Conversion wizard, click **Data to copy** in the options list.

Procedure

- Use disk-based cloning to create an expandable disk.
 - a From the **Data copy type** drop-down menu, select **Copy all disks and maintain layout**.
 - b From the **Type** drop-down menu, select **Not pre-allocated**.
 - c To apply your settings, select another option from the options list or click **Next**.
- Use volume-based cloning to create an expandable disk.
 - a From the **Data copy type** drop-down menu, select **Select volumes to copy** and click **Advanced**.
 - b Select the **Destination layout** tab, select a virtual disk, and select **Not pre-allocated** from the **Type** drop-down menu.
 - c To apply your settings, select another option from the options list or click **Next**.

Converter Standalone copies only the existing data to the destination datastore. The empty disk space from the virtual disk is not copied to the datastore. As you use the destination virtual machine and write new data to the disk, the size of the destination disk grows.

Exclude a Source Disk from the Conversion Task

You can select a disk from the source machine and delete it from the disk layout of the destination virtual machine.

Prerequisites

The source machine must have more than one hard disk.

On the Options page of the Conversion wizard, click **Data to copy** in the options list.

Procedure

- 1 From the **Data copy type** drop-down menu, select **Select volumes to copy**.
- 2 Delete the disk.

Option	Description
Preserve the volumes associated with the disk	a Click Advanced and select the Destination layout tab.
	b Move the volumes from the disk you want to delete to another virtual disks.
	c Highlight the empty disk and click Remove disk .
Delete the volumes associated with the disk	a Click Advanced and select the Source volumes tab.
	b Deselect the volumes associated with the disk that you want to delete.

- 3 Save your settings.

Option	Description
Select another option from the options list	Saves your settings and displays the pane for the selected option.
Click Next	Saves your settings and displays the next page of the Conversion wizard. <ul style="list-style-type: none"> ■ The Customizations page is displayed if you select Customize guest preferences for the virtual machine in the Advanced options pane. ■ The Summary page is displayed if you do not select Customize guest preferences for the virtual machine in the Advanced options pane.

Converter Standalone creates .vmdk files in the destination datastore only for the virtual disks you selected to preserve.

Copy All Disks to the Destination

To preserve the source disks on the destination virtual machine, you can copy all disks to the destination.

Disk-based cloning is not available for powered-on machine sources.

Prerequisites

On the Options page of the Conversion wizard, click **Data to copy** in the options list.

Procedure

- 1 From the **Data copy type** drop-down menu, select **Copy all disks and maintain layout**.
- 2 (Optional) If the destination datastore is low on disk space, click a virtual disk and select a different datastore from the **Destination datastore** drop-down menu.

NOTE You must have access to more than one datastore to move a disk to a different datastore.

- 3 Save your settings.

Option	Description
Select another option from the options list	Saves your settings and displays the pane for the selected option.
Click Next	Saves your settings and displays the next page of the Conversion wizard. <ul style="list-style-type: none"> ■ The Customizations page is displayed if you select Customize guest preferences for the virtual machine in the Advanced options pane. ■ The Summary page is displayed if you do not select Customize guest preferences for the virtual machine in the Advanced options pane.

Converter Standalone copies the disks to the selected datastores and preserves the source disk layout.

Create a Linked Clone

A linked clone is a VMware virtual machine that shares the virtual disk of the source virtual machine or system image. Linked clones are useful for quickly checking the compatibility of non-VMware images, such as .sv2i and .vmc files.

You can create linked clones only when you convert a virtual machine or other image source to a hosted destination.

You cannot create linked clones from Parallels source images.

You cannot create a linked clone if the source image is password-protected.



CAUTION Linked clones converted from Virtual PC and Virtual Server machines, and from LiveState images are corrupted if the source is modified or powered on after the conversion.

Prerequisites

Turn off the source virtual machine.

To verify that your source type is a supported third-party source, see [“Supported Source Types,”](#) on page 21.

Procedure

- 1 On the Destination System page, select **VMware Workstation or other VMware virtual machine** as a destination and click **Next**.
- 2 On the Options page, click **Data to copy** in the left pane.
- 3 In the **Data copy type** drop-down menu, select **Linked clone**.
- 4 Save your settings.

Option	Description
Select another option from the options list	Saves your settings and displays the pane for the selected option.
Click Next	Saves your settings and displays the next page of the Conversion wizard. <ul style="list-style-type: none"> ■ The Customizations page is displayed if you select Customize guest preferences for the virtual machine in the Advanced options pane. ■ The Summary page is displayed if you do not select Customize guest preferences for the virtual machine in the Advanced options pane.

You have set up a conversion task to create a linked clone.

Edit the Number of Processors

You can change the number of processors that the destination virtual machine uses.

Prerequisites

Make sure the destination host and the guest operating system support the number of processors you assign to the destination virtual machine.

On the Options page of the Conversion wizard, click **Devices** in the options list.

Procedure

- 1 From the **Number of processors** drop-down menu, select the processor count for the destination virtual machine.
- 2 Save your settings.

Option	Description
Select another option from the options list	Saves your settings and displays the pane for the selected option.
Click Next	Saves your settings and displays the next page of the Conversion wizard. <ul style="list-style-type: none"> ■ The Customizations page is displayed if you select Customize guest preferences for the virtual machine in the Advanced options pane. ■ The Summary page is displayed if you do not select Customize guest preferences for the virtual machine in the Advanced options pane.

The destination virtual machine is configured with the number of processors that you selected. If Converter Standalone shows a message that the destination hardware does not support the number of processors you selected, you must select a supported number of processors.

Allocate Memory for the Destination Virtual Machine

You can change the amount of memory allocated to the destination virtual machine.

By default, Converter Standalone recognizes the amount of memory on the source machine and allocates it to the destination virtual machine.

Prerequisites

On the Options page of the Conversion wizard, click **Devices** in the options list.

Procedure

- 1 In the Memory panel, use the slider or the spin-box to specify the amount of memory for the destination virtual machine.
- 2 Save your settings.

Option	Description
Select another option from the options list	Saves your settings and displays the pane for the selected option.
Click Next	Saves your settings and displays the next page of the Conversion wizard. <ul style="list-style-type: none"> ■ The Customizations page is displayed if you select Customize guest preferences for the virtual machine in the Advanced options pane. ■ The Summary page is displayed if you do not select Customize guest preferences for the virtual machine in the Advanced options pane.

Converter Standalone validates the memory amount. A warning appears if you set the memory amount to more than the maximum supported or to less than the required minimum.

Specify a Disk Controller for the Destination Virtual Machine

You can select a disk controller type for the destination virtual disks.

Prerequisites

On the Options page of the Conversion wizard, click **Devices** in the options list.

Procedure

- 1 From the **Disk controller** drop-down menu, select a disk controller for the destination virtual disk.

Option	Description
SCSI Bus Logic	Use SCSI virtual disks in the destination virtual machine.
IDE	Use IDE virtual disks in the destination virtual machine.
LSI Logic	Use LSI Logic SCSI virtual disks in the destination virtual machine.
LSI Logic SAS	Use LSI Logic SCSI (SAS) virtual disks in the destination virtual machine.
Preserve source	Use the same types of disk controllers as those installed on the source machine.

- 2 Save your settings.

Option	Description
Select another option from the options list	Saves your settings and displays the pane for the selected option.
Click Next	Saves your settings and displays the next page of the Conversion wizard. <ul style="list-style-type: none"> ■ The Customizations page is displayed if you select Customize guest preferences for the virtual machine in the Advanced options pane. ■ The Summary page is displayed if you do not select Customize guest preferences for the virtual machine in the Advanced options pane.

Configure the Network Settings of the Destination Virtual Machine

You can change the number of network adapters and select the network that the destination virtual machine uses. You can also set network adapters to connect to the network when the destination virtual machine powers on.

NOTE You cannot use IPv6 to customize the guest operating systems of virtual machines.

Prerequisites

On the Options page of the Conversion wizard, select **Networks** from the options list.

Procedure

- 1 From the **Network adapters to connect** drop-down menu, select the number of network adapters to be used by the destination virtual machine.
- 2 Use the **Network** drop-down menu to select the network that the adapter connects to.
- 3 To connect an adapter when you power on the destination virtual machine, select the **Connect at power-on** check box.
- 4 Save your settings.

Option	Description
Select another option from the options list	Saves your settings and displays the pane for the selected option.
Click Next	Saves your settings and displays the next page of the Conversion wizard. <ul style="list-style-type: none"> ■ The Customizations page is displayed if you select Customize guest preferences for the virtual machine in the Advanced options pane. ■ The Summary page is displayed if you do not select Customize guest preferences for the virtual machine in the Advanced options pane.

Configure the Network for the Helper Virtual Machine

When you convert a powered-on Linux machine, Converter Standalone creates a Helper virtual machine on the destination. The Helper virtual machine needs network access to the source machine to clone the source files. Default conversion settings enforce automatic acquisition of an IPv4 address and a DNS server for the Helper virtual machine, but you can set up this network connection manually.

Procedure

- 1 On the Options page of the Conversion wizard, click **Helper VM network**.
- 2 (Optional) To assign a static IPv4 address to the Helper virtual machine, select **Use the following IP address** and specify the IPv4 address, subnet mask, and default gateway.

Be sure that the IP address you specify for the Helper virtual machine is not already in use on the network.
- 3 (Optional) Select **Use the following DNS server address** and type the preferred DNS server address to configure the DNS server address manually.

Optionally, you can type an alternative DNS server address as well.
- 4 Save your settings.

Option	Description
Select another option from the options list	Saves your settings and displays the pane for the selected option.
Click Next	Saves your settings and displays the next page of the Conversion wizard. <ul style="list-style-type: none"> ■ The Customizations page is displayed if you select Customize guest preferences for the virtual machine in the Advanced options pane. ■ The Summary page is displayed if you do not select Customize guest preferences for the virtual machine in the Advanced options pane.

Converter Standalone uses the IP address and DNS server you specify to copy data from the source Linux machine to the Helper virtual machine during conversion.

Configure the Software on the Destination Virtual Machine

You can configure the guest operating system so that it is ready to operate in a virtual environment.

Software configuration includes a number of settings.

- [Customize the Windows Guest Operating System](#) on page 61
You can customize guest operating systems running Windows XP or later so that the virtual machine is prepared to work immediately in the destination environment.
- [Install VMware Tools on the Destination Virtual Machine](#) on page 64
Install VMware Tools to improve graphics performance of the guest operating system. Other enhancements include automatic grab and release of the mouse pointer, copying and pasting between guest and host, improved mouse performance, and so on.
- [Remove System Restore Checkpoints](#) on page 65
When you convert source machines running Windows XP or later, you can remove all System Restore checkpoints so that the conversion process is faster.

Customize the Windows Guest Operating System

You can customize guest operating systems running Windows XP or later so that the virtual machine is prepared to work immediately in the destination environment.

Prerequisites

Save the Sysprep files to %ALLUSERSPROFILE%\Application Data\VMware\VMware vCenter Converter Standalone\sysprep on the machine that runs vCenter Converter server. For more details on the Sysprep files location for different operating systems, see [Save Sysprep Files](#).

On the Options page of the Conversion wizard, click **Advanced**, select **Customize guest preferences for the virtual machine**, and click **Next** to view and adjust the available customization options.

- [Customize the Identity of the Destination Virtual Machine](#) on page 61
To configure the identity of the destination virtual machine for the destination network, personalize it by editing its name, owner, and organization name, and by generating a new security ID.
- [Enter the Windows License Information](#) on page 62
Ensure that you enter licensing information for all destination virtual machines running guest operating systems as necessary.
- [Set the Time Zone for the Destination Virtual Machine](#) on page 63
You can set the time zone if you are converting a virtual machine to use in a different time zone.
- [Configure the Network Adapters](#) on page 63
You can configure the network settings of the virtual machine to work with the network configuration of the destination environment.
- [Assign a Workgroup or Domain Details](#) on page 64
You can set up the workgroup and the domain in which the destination virtual machine belongs.

Customize the Identity of the Destination Virtual Machine

To configure the identity of the destination virtual machine for the destination network, personalize it by editing its name, owner, and organization name, and by generating a new security ID.

Prerequisites

On the Options page of the Conversion wizard, click **Advanced**, select **Customize guest preferences for the virtual machine**, and click **Next** to view and adjust the available customization options.

Procedure

- 1 On the Customizations page, select **Computer information** from the options list.
- 2 Customize the guest operating system identity.
 - a In the **Computer Name** text box, specify a computer name to identify the virtual machine on the network.
Valid characters include A-Z, a-z, 0-9, and the hyphen (-). The underscore (_) is nonstandard, but Converter Standalone permits it. The recommended length for most languages is 15 characters or less. Computer names cannot consist only of numerals.
 - b In the **Owner Name** text box, write the name of the owner of the virtual machine.
Valid characters include A-Z, a-z, 0-9, and the hyphen (-). The underscore (_) is nonstandard, but Converter Standalone permits it. The owner name cannot have more than 63 characters or consist only of numerals.
 - c In the **Organization** field, enter an organization name.
Valid characters include all printable characters. The limit is 63 characters.
- 3 (Optional) To create a new security identifier, select **Generate New Security ID (SID)**.
By default, the security ID is selected for source systems that run Windows Vista or later and cannot be deselected.

The identifiers of the destination virtual machine are assigned according to your settings.

What to do next

You can select another option to set or click **Next** to view a summary of the conversion task. If the **Next** button is inactive, check the Current settings list for other settings that need your attention on this page.

Enter the Windows License Information

Ensure that you enter licensing information for all destination virtual machines running guest operating systems as necessary.

Prerequisites

On the Options page of the Conversion wizard, click **Advanced**, select **Customize guest preferences for the virtual machine**, and click **Next** to view and adjust the available customization options.

Procedure

- 1 On the Customizations page, select **Windows license** from the options list.
- 2 Type **Product ID** information for the destination virtual machine.
- 3 (Optional) Select **Include server license information** if the guest operating system is Windows Server 2003 or Windows Server 2008.
- 4 Select a **Server license mode** option.

Option	Description
Per seat	For individual user licenses.
Per server	For a concurrent user license. Specify the Maximum connections value when you select this option.

The Windows license information is saved to the destination virtual machine after the conversion.

What to do next

You can select another option to set or click **Next** to view a summary of the conversion task. If the **Next** button is inactive, check the Current settings list for other settings that need your attention on this page.

Set the Time Zone for the Destination Virtual Machine

You can set the time zone if you are converting a virtual machine to use in a different time zone.

Prerequisites

On the Options page of the Conversion wizard, click **Advanced**, select **Customize guest preferences for the virtual machine**, and click **Next** to view and adjust the available customization options.

Procedure

- 1 On the Customizations page, select **Time zone** from the options list.
- 2 Select the target time zone from the **Time zone** drop-down menu.

The time zone is set on the destination virtual machine after the conversion.

What to do next

You can select another option to set or click **Next** to view a summary of the conversion task. If the **Next** button is inactive, check the Current settings list for other settings that need your attention on this page.

Configure the Network Adapters

You can configure the network settings of the virtual machine to work with the network configuration of the destination environment.

The option for configuring network adapters is available for all supported destinations.

NOTE You cannot use IPv6 to customize the guest operating systems of virtual machines.

Prerequisites

On the Options page of the Conversion wizard, click **Advanced**, select **Customize guest preferences for the virtual machine**, and click **Next** to view and adjust the available customization options.

Procedure

- 1 On the Customizations page, select **Network interface settings** from the options list.
- 2 Select a network adapter and click **Customize** to configure its properties.
 - a On the **General** tab, type the IPv4 address and DNS server address.
 - b On the **DNS** tab, specify the DNS connections by entering DNS suffixes.
 - c Enter a DNS suffix and click **Add**.
You can add more than one DNS suffix.
 - d If you are specifying multiple DNS suffixes, use **Move up** and **Move down** to specify the order in which the guest operating system uses the connections.
 - e On the **WINS** tab, type the primary and secondary WINS IP address in the text box.

When powered on, the destination virtual machine uses the network settings that you configured.

What to do next

You can select another option to set or click **Next** to view a summary of the conversion task. If the **Next** button is inactive, check the Current settings list for other settings that need your attention on this page.

Assign a Workgroup or Domain Details

You can set up the workgroup and the domain in which the destination virtual machine belongs.

Prerequisites

On the Options page of the Conversion wizard, click **Advanced**, select **Customize guest preferences for the virtual machine**, and click **Next** to view and adjust the available customization options.

Procedure

- 1 On the Customizations page, select **Workgroup/Domain** from the options list.
- 2 Select how the virtual machine participates in the destination network.

Option	Description
Workgroup	Valid characters include A-Z, a-z, 0-9, space, and the hyphen (-). Maximum length is 15 characters.
Windows server domain	The text box must have a value. Valid characters include A-Z, a-z, 0-9, space, period, and hyphen (-). The entire text string can be up to 64 characters. User credentials are required.

The destination virtual machine connects to the specified workgroup and domain server.

What to do next

You can select another option to set or click **Next** to view a summary of the conversion task. If the **Next** button is inactive, check the Current settings list for other settings that need your attention on this page.

Install VMware Tools on the Destination Virtual Machine

Install VMware Tools to improve graphics performance of the guest operating system. Other enhancements include automatic grab and release of the mouse pointer, copying and pasting between guest and host, improved mouse performance, and so on.

Prerequisites

On the Options page of the Conversion wizard, click **Advanced options**.

Procedure

- 1 Select the **Install VMware Tools on the destination virtual machine** check box.
- 2 Save your settings.

Option	Description
Select another option from the options list	Saves your settings and displays the pane for the selected option.
Click Next	Saves your settings and displays the next page of the Conversion wizard. <ul style="list-style-type: none"> ■ The Customizations page is displayed if you select Customize guest preferences for the virtual machine in the Advanced options pane. ■ The Summary page is displayed if you do not select Customize guest preferences for the virtual machine in the Advanced options pane.

Converter Standalone installs VMware Tools on the destination machine when the destination machine is powered on for the first time after the conversion.

Remove System Restore Checkpoints

When you convert source machines running Windows XP or later, you can remove all System Restore checkpoints so that the conversion process is faster.

System Restore is enabled on Windows Vista and Windows XP systems by default. For Windows Vista, if you are performing volume-based file-level cloning, System Restore checkpoints are automatically removed from the destination virtual machine, regardless of whether the **Remove System Restore checkpoints on destination** check box is selected or deselected. If you are performing disk-based cloning or volume-based block-level cloning, deselecting the check box instructs Converter Standalone to keep the System Restore checkpoints in the destination virtual machine.

Removing all System Restore checkpoints prevents the target machine from reverting to a preconversion state. Restoring a checkpoint in the target virtual machine that was created before you cloned the source machine can damage the system and prevent the destination virtual machine from starting up.

Prerequisites

On the Options page of the Conversion wizard, click **Advanced options**.

Procedure

- 1 Select the **Remove System Restore checkpoints on destination** check box.
- 2 Save your settings.

Option	Description
Select another option from the options list	Saves your settings and displays the pane for the selected option.
Click Next	<p>Saves your settings and displays the next page of the Conversion wizard.</p> <ul style="list-style-type: none"> ■ The Customizations page is displayed if you select Customize guest preferences for the virtual machine in the Advanced options pane. ■ The Summary page is displayed if you do not select Customize guest preferences for the virtual machine in the Advanced options pane.

Configure the Conversion Task

You can configure the conversion process and select the behavior of the source and destination machine during and after conversion. You can change the status of the source and destination services only when the source machine is running a Windows operating system.

- [Set the Startup Mode for Destination Services](#) on page 66
To minimize downtime for a Windows service, you can select the service and have it start automatically on the destination virtual machine. You can also prevent Windows services from automatically starting on the destination machine.
- [Stop Services Running on the Source Machine](#) on page 67
You can make sure that you do not lose data from services running on the source machine. You can select the services that you want to stop before Converter Standalone synchronizes the data between the source and destination machine. As a result, the services do not generate data while source and destination machines are synchronized.
- [Synchronize the Destination Machine with Changes Made to the Source Machine](#) on page 68
When you convert a powered-on Windows machine, Converter Standalone copies data from the source machine to the destination machine while the source machine is still running and generating changes. This process is the first transfer of data. You can transfer data for the second time by copying only the changes made during the first transfer of data. This process is called synchronization.

- [Power Off the Source Machine After Conversion](#) on page 69
If your source machine is running services that you want to start on the destination virtual machine after conversion, you can power off the source machine to avoid interference between source and destination services.
- [Power On the Destination Virtual Machine After Conversion](#) on page 69
You can minimize the downtime of important services by powering on the destination virtual machine immediately after the conversion is complete.
- [Limit the Amount of Resources Used by the Conversion Task](#) on page 70
A conversion task competes for computing resources with other processes. To limit the impact of the conversion task on other workloads, you can throttle the task. If you do not throttle conversion tasks, they are carried out with normal priority and depending on the available computing resources during conversion.
- [Uninstall Converter Standalone Agent from the Source Machine](#) on page 70
When setting up a conversion task for a powered-on Windows source or a Hyper-V Server virtual machine, you can choose how you want to remove the Converter Standalone agent from the source after the conversion. By default, the Converter Standalone agent is uninstalled automatically, but you can choose to uninstall it manually.

Set the Startup Mode for Destination Services

To minimize downtime for a Windows service, you can select the service and have it start automatically on the destination virtual machine. You can also prevent Windows services from automatically starting on the destination machine.

You can change the settings for the destination services only when you convert source machines that run Windows.

Prerequisites

On the Options page of the Conversion wizard, click **Services** in the options list.

Procedure

- 1 If you are converting a powered-on source machine, click the **Destination services** tab.

If the source machine is powered off, the Services pane displays no tabs. You can modify only the starting mode of destination services.

- 2 On the services list, select the startup mode for each service.

Option	Description
Automatic	The service starts automatically after the destination machine is powered on.
Manual	The service does not start after the destination machine is powered on, but you can start it manually.
Disabled	The service is disabled and does not start after the destination machine is powered on.

- 3 Save your settings.

Option	Description
Select another option from the options list	Saves your settings and displays the pane for the selected option.
Click Next	Saves your settings and displays the next page of the Conversion wizard. <ul style="list-style-type: none"> ■ The Customizations page is displayed if you select Customize guest preferences for the virtual machine in the Advanced options pane. ■ The Summary page is displayed if you do not select Customize guest preferences for the virtual machine in the Advanced options pane.

Stop Services Running on the Source Machine

You can make sure that you do not lose data from services running on the source machine. You can select the services that you want to stop before Converter Standalone synchronizes the data between the source and destination machine. As a result, the services do not generate data while source and destination machines are synchronized.

You can stop services on the source only when you convert a powered-on Windows machine.

Prerequisites

On the Options page of the Conversion wizard, click **Services** in the options list.

Procedure

- 1 Click the **Source services** tab.
- 2 To stop a service on the source machine before synchronization, highlight a service and select the **Stop** check box to the right.
- 3 Save your settings.

Option	Description
Select another option from the options list	Saves your settings and displays the pane for the selected option.
Click Next	Saves your settings and displays the next page of the Conversion wizard. <ul style="list-style-type: none"> ■ The Customizations page is displayed if you select Customize guest preferences for the virtual machine in the Advanced options pane. ■ The Summary page is displayed if you do not select Customize guest preferences for the virtual machine in the Advanced options pane.

Converter Standalone stops the selected source services before it synchronizes the destination machine with the source machine.

Synchronize the Destination Machine with Changes Made to the Source Machine

When you convert a powered-on Windows machine, Converter Standalone copies data from the source machine to the destination machine while the source machine is still running and generating changes. This process is the first transfer of data. You can transfer data for the second time by copying only the changes made during the first transfer of data. This process is called synchronization.

Synchronization is available only for Windows XP or later source operating systems.

If you resize FAT volumes or shrink NTFS volumes, you cannot use the synchronization option.

Prerequisites

Stop various source services to make sure they do not generate additional changes during the synchronization, as that might lead to data loss.

On the Options page of the Conversion wizard, click **Advanced options**.

Procedure

- 1 Select **Synchronize changes that occur to the source during cloning**.
- 2 Save your settings.

Option	Description
Select another option from the options list	Saves your settings and displays the pane for the selected option.
Click Next	Saves your settings and displays the next page of the Conversion wizard. <ul style="list-style-type: none"> ■ The Customizations page is displayed if you select Customize guest preferences for the virtual machine in the Advanced options pane. ■ The Summary page is displayed if you do not select Customize guest preferences for the virtual machine in the Advanced options pane.

Converter Standalone synchronizes the destination machine with the source machine after the conversion is complete.

Power Off the Source Machine After Conversion

If your source machine is running services that you want to start on the destination virtual machine after conversion, you can power off the source machine to avoid interference between source and destination services.

Prerequisites

On the Options page of the Conversion wizard, click **Advanced options**.

Procedure

- 1 In the **Post-conversion power state** panel, select **Power off source machine**.
- 2 Save your settings.

Option	Description
Select another option from the options list	Saves your settings and displays the pane for the selected option.
Click Next	Saves your settings and displays the next page of the Conversion wizard. <ul style="list-style-type: none"> ■ The Customizations page is displayed if you select Customize guest preferences for the virtual machine in the Advanced options pane. ■ The Summary page is displayed if you do not select Customize guest preferences for the virtual machine in the Advanced options pane.

Converter Standalone powers off the source machine after the conversion is complete.

Power On the Destination Virtual Machine After Conversion

You can minimize the downtime of important services by powering on the destination virtual machine immediately after the conversion is complete.

Prerequisites

On the Options page of the Conversion wizard, click **Advanced options**.

Procedure

- 1 In the **Post-conversion power state** panel, select **Power on destination machine**.
- 2 Save your settings.

Option	Description
Select another option from the options list	Saves your settings and displays the pane for the selected option.
Click Next	Saves your settings and displays the next page of the Conversion wizard. <ul style="list-style-type: none"> ■ The Customizations page is displayed if you select Customize guest preferences for the virtual machine in the Advanced options pane. ■ The Summary page is displayed if you do not select Customize guest preferences for the virtual machine in the Advanced options pane.

After the conversion, Converter Standalone powers on the destination machine.

Limit the Amount of Resources Used by the Conversion Task

A conversion task competes for computing resources with other processes. To limit the impact of the conversion task on other workloads, you can throttle the task. If you do not throttle conversion tasks, they are carried out with normal priority and depending on the available computing resources during conversion.

A powered-on source machine runs its own conversion task. You can limit the impact of the conversion task on other workloads running on the powered-on machine.

For source machines that are not powered-on, you can limit the resources used on the machine where Converter Standalone server is installed.

Throttling controls the CPU and network resources that the conversion process uses. You cannot throttle disk I/O from the Converter Standalone interface, but can throttle it indirectly by throttling the network bandwidth.

NOTE You cannot throttle conversion tasks for powered-on source machines that run Linux.

Procedure

- 1 On the Options page, select **Throttling** from the options list.
- 2 From the **CPU throttling** drop-down menu, select the priority of the conversion task.

Option	Description
None	The priority of the current conversion task is set to normal.
Light	The priority of the current conversion task is reduced slightly below normal.
Medium	The priority of the current conversion task is set to lowest.

NOTE Converter Standalone reduces the thread priorities of conversion tasks to control the CPU resources they consume.

- 3 (Optional) Select **Network bandwidth throttling** and specify the maximum network bandwidth at which Converter Standalone performs the conversion task.
- 4 Save your settings.

Option	Description
Select another option from the options list	Saves your settings and displays the pane for the selected option.
Click Next	Saves your settings and displays the next page of the Conversion wizard. <ul style="list-style-type: none"> ■ The Customizations page is displayed if you select Customize guest preferences for the virtual machine in the Advanced options pane. ■ The Summary page is displayed if you do not select Customize guest preferences for the virtual machine in the Advanced options pane.

Uninstall Converter Standalone Agent from the Source Machine

When setting up a conversion task for a powered-on Windows source or a Hyper-V Server virtual machine, you can choose how you want to remove the Converter Standalone agent from the source after the conversion. By default, the Converter Standalone agent is uninstalled automatically, but you can choose to uninstall it manually.

Use Add or Remove Programs on the source machine to uninstall the Converter Standalone agent.

Procedure

- 1 In Windows, run the **Add or Remove Programs** utility.
- 2 In the list of installed programs, locate and click **VMware vCenter Converter Standalone Agent**.
- 3 Click **Remove**.
- 4 In the confirmation dialog box, click **Yes**.

Windows installer uninstalls the Converter Standalone agent from the source machine.

Review the Summary and Submit the Conversion Task

On the Summary page, you can view a summary of the conversion task before you add it to the task list.

The summary includes information about the source machine, the destination virtual machine, and destination customization settings (if any). Converter Standalone performs task validation at this stage.

Prerequisites

You must complete all steps in the Conversion wizard to access the Summary page.

Procedure

- 1 Review the summary of the task.
- 2 Click **Finish** to submit the task.

Converter Standalone validates the task parameters. This might take several minutes. If the validation succeeds, the conversion task appears in the Tasks list in the main application window. If the validation fails, click **Back** and correct the invalid parameters as prompted.

Configure Virtual Machines

You might need to configure a virtual machine after you convert it so that it is ready to start in the destination virtual environment. You might also need to configure virtual machines if their virtual environment changes or if you need to improve their performance.

NOTE Only virtual machines that are running Windows XP or later can be configured. You cannot configure virtual machines that run operating systems other than Windows.

Unlike the conversion process, which is nondestructive to the source machine, the configuration process affects the source. When you create a configuration task, your settings are applied to the configuration source machine and you cannot revert them.

Procedure

- 1 [Save Sysprep Files](#) on page 73
To customize the guest operating system of a virtual machine that runs Windows Server 2003 or Windows XP, you must save the Sysprep files to the specified locations on the machine where Converter Standalone server runs.
- 2 [Start the Configuration Wizard](#) on page 74
You can configure VMware desktop virtual machines or virtual machines managed by ESX hosts or vCenter Server.
- 3 [Select a Source Machine to Configure](#) on page 74
You can select a powered-off VMware virtual machine as the source for a configuration task.
- 4 [Select the Options to Configure](#) on page 77
When you create a configuration task, you can select which steps of the configuration process to run.
- 5 [Review and Submit the Configuration Task](#) on page 81
After you review your settings on the Summary page of the Configuration wizard, you can go back and change a setting or submit the task.

Save Sysprep Files

To customize the guest operating system of a virtual machine that runs Windows Server 2003 or Windows XP, you must save the Sysprep files to the specified locations on the machine where Converter Standalone server runs.

Prerequisites

You must download the Sysprep files that correspond to the operating system of the source machine.

Procedure

- ◆ Save the Sysprep files that correspond to the source operating system to the specified location on the machine where Converter Standalone server runs.

Option	Description
Windows Server 2003 (32bit)	The Sysprep files Location for Windows: %ALLUSERSPROFILE%\Application Data\VMware\VMware vCenter Converter Standalone\sysprep\svr2003
Windows Server 2003 (64bit)	The Sysprep files Location for Windows: %ALLUSERSPROFILE%\Application Data\VMware\VMware vCenter Converter Standalone\sysprep\svr2003-64
Windows XP (32bit)	The Sysprep files Location for Windows: %ALLUSERSPROFILE%\Application Data\VMware\VMware vCenter Converter Standalone\sysprep\xp
Windows XP (64bit)	The Sysprep files Location for Windows: %ALLUSERSPROFILE%\Application Data\VMware\VMware vCenter Converter Standalone\sysprep\xp-64

You can now customize Windows Server 2003 (32bit and 64bit) and Windows XP (32bit and 64bit) guest operating systems by using the Conversion or the Configuration wizard.

What to do next

You can now use the Configuration wizard to customize Windows guest operating systems.

Start the Configuration Wizard

You can configure VMware desktop virtual machines or virtual machines managed by ESX hosts or vCenter Server.

A physical machine cannot be a configuration source.

You can configure only powered-off virtual machines.

Procedure

- 1 Start the VMware vCenter Converter Standalone application.
- 2 Click **Configure Machine** in the application menu.

The Configuration wizard opens.

What to do next

Select the source machine to configure.

Select a Source Machine to Configure

You can select a powered-off VMware virtual machine as the source for a configuration task.

Prerequisites

On the Source System page of the Configuration wizard, select a source type from the drop-down menu.

What to do next

On the Options page of the Configuration wizard, you can select the required configuration options.

Select a VMware Infrastructure Virtual Machine to Configure

If the system you want to configure is a virtual machine that runs on an ESX host or on an ESX host managed by vCenter Server, you must select a VMware Infrastructure virtual machine as the source type.

Prerequisites

Power off the source machine before the configuration.

In the main application window of Converter Standalone, click **Configure Machine** to open the Configuration wizard.

Procedure

- 1 On the Source System page of the Configuration wizard, select **VMware Infrastructure virtual machine** from the **Select source type** drop-down menu.
- 2 Provide the IP address or host name and credentials for authentication with the ESX host or the vCenter Server, and click **Next**.

The Source Machine page appears, displaying the host name or IP address and the inventory of the ESX host or the vCenter Server.

What to do next

On the Source Machine page of the Configuration wizard you can browse the virtual infrastructure inventory and select the virtual machine to configure.

Specify the vCenter Server Virtual Machine to Configure

If you choose to configure a virtual machine managed by a vCenter Server or ESX host, you must browse the inventory to locate the source virtual machine.

Prerequisites

On the Source System page of the Configuration wizard, select **VMware Infrastructure virtual machine** as the configuration source and click **Next** to proceed to the Source Machine page.

Procedure

- 1 (Optional) If you are connected to a vCenter Server, select a virtual machine view from the **Specify machine with** drop-down menu.

Option	Description
Hosts and Clusters	The Inventory tree pane provides a view of hosts, clusters, resource pools, and vApps. If you select a host managed by a cluster, you see the full list of virtual machines and templates in the VM list view. If you select a standalone host or a cluster, you see only the virtual machines that are not deployed in the resource pools of that host or cluster.
VMs and Templates	The Inventory tree pane provides a view of datacenters and VM folders.

- 2 (Optional) If you are connected to a vCenter Server, select an object from the Inventory tree pane.

Option	Description
Hosts and Clusters	Select cluster, ESX host, resource pool, or vApp.
VMs and Templates	Select datacenter or VM folder.

- 3 From the virtual machines list, select the virtual machine you want to configure.

You can search for virtual machines in the VM list by typing one or more letters of their names in the **Search for name with** text box. You can clear your search by clicking **Clear**.

NOTE If you connect to a vCenter Server that has a disconnected ESX instance (powered off, connected to another vCenter Server, or in maintenance mode), you cannot select a virtual machine from that ESX host.

- 4 (Optional) To refresh the Inventory, click **Refresh**.
- 5 (Optional) To view more details about a machine, select it and click **View source details**.
- 6 Click **Next** to proceed to the Options page.

What to do next

On the Options page of the Configuration wizard, you can select the required configuration options.

Select a VMware Desktop Virtual Machine to Configure

If the system you want to configure is a standalone VMware virtual machine created with VMware Workstation, VMware Fusion, VMware Player, VMware Server, or VMware ACE, you must select **VMware Workstation or other VMware virtual machine** as the configuration source type.

Prerequisites

If you plan to use a network path to locate the source, verify that the machine where Converter Standalone server runs has access to that network path.

In the main application window of Converter Standalone, click **Configure Machine** to open the Configuration wizard.

Procedure

- 1 On the Source System page of the Configuration wizard, select **VMware Workstation or other VMware virtual machine**.
- 2 Locate the virtual machine source.
 - If you are connected to a remote Converter Standalone server, provide a network path to the source virtual machine file (.vmx) in the **Virtual machine file** text box. For example, \\server\virtual_machines\virtual_machine.vmx.
 - If you are connected to a local Converter Standalone server, provide a network path or a local path to the .vmx file.

The file type choices are limited to VMware Workstation *.vmx files.

- 3 If you are connected to a remote Converter Standalone server, enter user credentials for accessing the source virtual machine.

You do not have to provide user credentials if you are connected to a local Converter Standalone server. In such cases, Converter Standalone uses the Windows credentials to connect to the source machine.

- 4 (Optional) To view more information about the selected source, click **View source details**
- 5 Click **Next** to proceed to the Options page.

What to do next

On the Options page of the Configuration wizard, you can select the required configuration options.

Select the Options to Configure

When you create a configuration task, you can select which steps of the configuration process to run.

Procedure

- ◆ On the Options page, select one or more configuration steps to perform and click **Next**.

Option	Description
Install VMware Tools on the destination virtual machine	Installs VMware Tools to enhance the performance of the destination virtual machine.
Customize guest preferences for the virtual machine	Allows you to customize Windows XP or later guest operating systems so that the virtual machine is prepared to work in the destination environment.
Remove System Restore checkpoints on destination	Removes System Restore checkpoints from the destination virtual machine.
Reconfigure destination virtual machine	Updates the drivers on the virtual machine so that it is bootable in a virtual environment.

What to do next

Depending on the configuration options you selected, you can either customize the guest operating system of the source virtual machine or view the Summary page of the Configuration wizard.

Install VMware Tools on a Virtual Machine

Install VMware Tools to improve graphics performance for the guest operating system of a configured virtual machine. Other enhancements include automatic grab and release of the mouse pointer, copying and pasting between guest and host, improved mouse performance, and so on.

Install VMware Tools on the virtual machine you are configuring.

Procedure

- ◆ On the Options page of the Configuration wizard, select **Install VMware Tools on the destination virtual machine** and click **Next**.

vCenter Converter Standalone installs VMware Tools on the configured virtual machine.

What to do next

Depending on the configuration options you selected, you can either customize the guest operating system or view the Summary page of the Configuration wizard.

Customize the Windows Guest Operating System

As a part of the configuration task, you can customize virtual machines running Windows XP or later.

Prerequisites

Save the Sysprep files to %ALLUSERSPROFILE%\Application Data\VMware\VMware vCenter Converter Standalone\sysprep on the machine that runs vCenter Converter server. For more details on the Sysprep files location for different operating systems, see [Save Sysprep Files](#).

On the Options page of the Configuration wizard, select **Customize guest preferences for the virtual machine** and click **Next** to view and adjust the available customization options.

- [Customize the Identity of a Virtual Machine](#) on page 78

To configure the identity of a virtual machine on a virtual network, personalize the virtual machine by editing its name, owner, and organization name, and by generating a new security ID.

- [Specify the Windows License Information](#) on page 79
Ensure that you enter licensing information for all destination virtual machines running guest operating systems as necessary.
- [Set the Time Zone](#) on page 79
You can configure the time zone for a virtual machine.
- [Configure the Network Adapters](#) on page 79
You can change the network settings of a virtual machine to work with the network configuration of the virtual environment.
- [Assign a Workgroup or Domain Details](#) on page 80
You can configure the workgroup and the domain for a virtual machine.

Customize the Identity of a Virtual Machine

To configure the identity of a virtual machine on a virtual network, personalize the virtual machine by editing its name, owner, and organization name, and by generating a new security ID.

Prerequisites

On the Options page of the Configuration wizard, select **Customize guest preferences for the virtual machine** and click **Next** to view and adjust the available customization options.

Procedure

- 1 On the Customizations page, select **Computer information** from the options list.
- 2 Customize the guest operating system identity.
 - a In the **Computer Name** text box, specify a computer name to identify the virtual machine on the network.

Valid characters include A-Z, a-z, 0-9, and the hyphen (-). The underscore (_) is nonstandard, but Converter Standalone permits it. The recommended length for most languages is 15 characters or less. Computer names cannot consist only of numerals.
 - b In the **Owner Name** text box, write the name of the owner of the virtual machine.

Valid characters include A-Z, a-z, 0-9, and the hyphen (-). The underscore (_) is nonstandard, but Converter Standalone permits it. The owner name cannot have more than 63 characters or consist only of numerals.
 - c In the **Organization** field, enter an organization name.

Valid characters include all printable characters. The limit is 63 characters.
- 3 (Optional) To create a new security identifier, select **Generate New Security ID (SID)**.

By default, the security ID is selected for source systems that run Windows Vista or later and cannot be deselected.

The identifiers of the configured virtual machine are assigned according to your settings.

What to do next

You can select another option to set or click **Next** to view a summary of the configuration task. If the **Next** button is inactive, check the Current settings list for other settings that need your attention on this page.

Specify the Windows License Information

Ensure that you enter licensing information for all destination virtual machines running guest operating systems as necessary.

Prerequisites

On the Options page of the Configuration wizard, select **Customize guest preferences for the virtual machine** and click **Next** to view and adjust the available customization options.

Procedure

- 1 On the Customizations page, select **Windows license** from the options list.
- 2 Type **Product ID** information for the destination virtual machine.
- 3 (Optional) Select **Include server license information** if the guest operating system is Windows Server 2003 or Windows Server 2008.
- 4 Select a **Server license mode** option.

Option	Description
Per seat	For individual user licenses.
Per server	For a concurrent user license. Specify the Maximum connections value when you select this option.

The Windows license information is saved to the configuration source machine when the configuration task is completed.

What to do next

You can select another option to set or click **Next** to view a summary of the configuration task. If the **Next** button is inactive, check the Current settings list for other settings that need your attention on this page.

Set the Time Zone

You can configure the time zone for a virtual machine.

Prerequisites

On the Options page of the Configuration wizard, select **Customize guest preferences for the virtual machine** and click **Next** to view and adjust the available customization options.

Procedure

- 1 On the Customizations page, select **Time zone** from the options list.
- 2 Select the target time zone from the **Time zone** drop-down menu.

The time zone is set on the source machine when the configuration task completes.

What to do next

You can select another option to set or click **Next** to view a summary of the configuration task. If the **Next** button is inactive, check the Current settings list for other settings that need your attention on this page.

Configure the Network Adapters

You can change the network settings of a virtual machine to work with the network configuration of the virtual environment.

The options for configuring network adapters are available for all supported customization sources.

Prerequisites

On the Options page of the Configuration wizard, select **Customize guest preferences for the virtual machine** and click **Next** to view and adjust the available customization options.

Procedure

- 1 On the Customizations page, select **Network interface settings** from the options list.
- 2 Select a network adapter and click **Customize** to configure its properties.
 - a On the **General** tab, type the IPv4 address and DNS server address.
 - b On the **DNS** tab, specify the DNS connections by entering DNS suffixes.
 - c Enter a DNS suffix and click **Add**.
You can add more than one DNS suffix.
 - d If you are specifying multiple DNS suffixes, use **Move up** and **Move down** to specify the order in which the guest operating system uses the connections.
 - e On the **WINS** tab, type the primary and secondary WINS IP address in the text box.

When powered on, the configured virtual machine uses the network settings that you specified.

What to do next

You can select another option to set or click **Next** to view a summary of the configuration task. If the **Next** button is inactive, check the Current settings list for other settings that need your attention on this page.

Assign a Workgroup or Domain Details

You can configure the workgroup and the domain for a virtual machine.

Prerequisites

On the Options page of the Configuration wizard, select **Customize guest preferences for the virtual machine** and click **Next** to view and adjust the available customization options.

Procedure

- 1 On the Customizations page, select **Workgroup/Domain** from the options list.
- 2 Select how the virtual machine participates in the destination network.

Option	Description
Workgroup	Valid characters include A-Z, a-z, 0-9, space, and the hyphen (-). Maximum length is 15 characters.
Windows server domain	The text box must have a value. Valid characters include A-Z, a-z, 0-9, space, period, and hyphen (-). The entire text string can be up to 64 characters. User credentials are required.

The configured virtual machine connects to the specified workgroup and domain server.

What to do next

You can select another option to set or click **Next** to view a summary of the configuration task. If the **Next** button is inactive, check the Current settings list for other settings that need your attention on this page.

Remove System Restore Checkpoints

Remove the System Restore checkpoints of newly imported source machines to prevent them from reverting to a preconversion state. For other configuration source machines, removing System Restore checkpoints helps you save disk space by deleting unnecessary data.

Procedure

- ◆ On the Options page of the Configuration wizard, select **Remove System Restore checkpoints on the destination** and click **Next**.

The System Restore checkpoints are deleted from the configuration source machine.

What to do next

Depending on the configuration options you selected, you can either customize the guest operating system or view the Summary page of the Configuration wizard.

Update the Device Drivers of a Virtual Machine

If a newly converted virtual machine does not start properly in the destination virtual environment, try configuring it to update its device drivers.

Procedure

- ◆ On the Options page of the Configuration wizard, select **Reconfigure destination virtual machine** and click **Next**.

Converter Standalone updates the device drivers on the source machine so it can work in the virtual environment.

What to do next

Depending on the configuration options you selected, you can either customize the guest operating system or view the Summary page of the Configuration wizard.

Review and Submit the Configuration Task

After you review your settings on the Summary page of the Configuration wizard, you can go back and change a setting or submit the task.

Procedure

- 1 Review the summary of the settings for the source virtual machine.
- 2 Click **Finish** to submit the configuration task.

The task appears in the tasks list of the main application window. You can view the progress on the **Task progress** tab.

What to do next

To view details about the configuration task, click the **Summary** tab.

Managing Conversion and Configuration Tasks

6

Converter Standalone provides a task manager for managing migrations and configurations for a single conversion.

After you create a task using the Converter Standalone wizards to set up how to convert or configure a machine, you can use the Task View of the Converter Standalone manager to manage running tasks, to edit the tasks, to check the progress of a task, and more.

Manage Tasks in the Task List

Converter Standalone provides a list of all tasks that are submitted. You can use the main application menus to control the way tasks appear in the task list.

Prerequisites

You must submit a conversion or configuration task to view it in the task list.

- [Add a Task to the Task List](#) on page 84
Converter Standalone runs concurrent conversion tasks and configuration tasks as they appear in the task list, depending on the maximum number of tasks that is set in **Administration menu > Maximum concurrent tasks**.
- [Control the Number of Tasks Running Concurrently](#) on page 84
You can set the number of tasks that can run concurrently to improve the conversion speed. Limiting the number of concurrent tasks helps you reduce the network resources required for the conversion tasks. Limiting the number of concurrent tasks also helps to limit the CPU load on the machine where the Converter Standalone server runs.
- [Copy, Cancel, or Delete Tasks](#) on page 84
In the Converter Standalone task list, you can copy, cancel, and delete tasks.
- [Check the Task Progress and the Log Files](#) on page 85
The Task list and the Task Details pane show the progress of tasks.
- [Filter the Tasks in the Task List](#) on page 87
The number of archived tasks can grow to be very large. To minimize clutter in the task list, you can lower the number of tasks that appear. You can select the tasks that you want the task list to display by filtering them.

Add a Task to the Task List

Converter Standalone runs concurrent conversion tasks and configuration tasks as they appear in the task list, depending on the maximum number of tasks that is set in **Administration menu > Maximum concurrent tasks**.

Procedure

- ◆ On the Summary page of the Conversion or the Configuration wizard, make sure no settings need adjustment, and click **Finish** to add a conversion or configuration task.

The task appears at the beginning of the task list.

What to do next

In the task list, you can view the progress, expected end time, and other details of the task. You can also stop running tasks and copy running, failed, or complete tasks to create tasks.

Control the Number of Tasks Running Concurrently

You can set the number of tasks that can run concurrently to improve the conversion speed. Limiting the number of concurrent tasks helps you reduce the network resources required for the conversion tasks. Limiting the number of concurrent tasks also helps to limit the CPU load on the machine where the Converter Standalone server runs.

You can set the number of concurrent tasks to any number from 1 to 12. The default number of concurrent tasks is set to **Maximum**.

Procedure

- 1 On the main menu, select **Administration > Maximum Concurrent Tasks**.
- 2 In the **Custom** spin-box, specify a number.
- 3 Click **OK**.

The setting takes effect immediately for all newly added tasks. See [Example 6-1](#).

Example 6-1. Limiting the Number of Concurrent Tasks

Assume that Converter Standalone is running 12 tasks. If you change the number of concurrent tasks to 6, these 12 tasks continue running, but all newly added tasks remain pending in the task list.

When the number of running tasks drops to 5, a new task from the wait list starts.

Copy, Cancel, or Delete Tasks

In the Converter Standalone task list, you can copy, cancel, and delete tasks.

While tasks are running, you can continue to add new tasks to the queue by using the Conversion or the Configuration wizards. In the tasks list, you can cancel, delete, or copy tasks.

- [Create a Task by Copying an Existing Task](#) on page 85
You can edit a task in the task list by creating a copy of the task and modifying its settings in the Conversion or the Configuration wizards. The settings for the original task appear at each step of the wizard so that you can reuse or change them.
- [Cancel a Task](#) on page 85
You can cancel a task in the queue or a task that is in progress.
- [Delete a Task](#) on page 85
The **Delete** option removes a task from the task list.

Create a Task by Copying an Existing Task

You can edit a task in the task list by creating a copy of the task and modifying its settings in the Conversion or the Configuration wizards. The settings for the original task appear at each step of the wizard so that you can reuse or change them.

NOTE You can copy only tasks that were created with the Converter Standalone client.

NOTE You cannot copy running conversion tasks for powered-on source machines.

Procedure

- 1 Select a task in the task list.
- 2 Select **Task > Copy As New**.
- 3 Follow the prompts to modify the task settings.
- 4 Click **Finish** to add the new task to the task list.

Cancel a Task

You can cancel a task in the queue or a task that is in progress.

When you cancel a conversion task, the task is removed from the queue. Canceling a configuration task removes it from the queue and reverts the source machine to its original state.

Canceling a task in progress does not suspend it. You cannot restart a canceled task. However, you can create a copy of the canceled task and add it to the task list to run it again.

Procedure

- 1 From the task list of the Task view, select a task.
- 2 Click **Cancel**.

The task is now out of the queue and the time of cancellation appears in the End Time column.

Delete a Task

The **Delete** option removes a task from the task list.

The **Delete** option does not work for queued tasks or tasks in progress.

Prerequisites

To delete a running task, cancel it and perform the following procedure.

Procedure

- 1 From the task list of the Task view, select the task that you want to remove.
- 2 Click **Delete**.

The task is removed from the task list.

Check the Task Progress and the Log Files

The Task list and the Task Details pane show the progress of tasks.

If problems arise that cause the task to fail, you can also review information in the log files.

- [View Task Progress](#) on page 86

The Task view and the Details view show the progress of tasks. You can check the estimated time left to the completion of a conversion task in the End Time column.

- [Export the Log Files for a Task](#) on page 86

If problems arise that cause a task to fail, you can review information about the task in the log files or send a copy of log files to VMware technical support. You can export the log files for a specific task in the task list.

- [Export All Log Files](#) on page 86

You can export the log files of all tasks that are present to the current server log files.

- [Back-End and Client Log Files Locations](#) on page 87

Converter Standalone saves log files as it operates.

View Task Progress

The Task view and the Details view show the progress of tasks. You can check the estimated time left to the completion of a conversion task in the End Time column.

You can obtain a general indication of a task's progress by looking at its row in the task list of the Task view. View the **Task progress** tab in the Details view for more complete information.

Procedure

- 1 Select the row in the task list for the task to view.
The information for that task appears in the Details pane below the tasks list.
- 2 Click the **Task progress** tab to view the conversion status and log highlights.

Export the Log Files for a Task

If problems arise that cause a task to fail, you can review information about the task in the log files or send a copy of log files to VMware technical support. You can export the log files for a specific task in the task list.

Procedure

- 1 Select the task in the task list.
- 2 In the Details pane, click the **Task Progress** tab.
- 3 Click **Export Logs**.
- 4 Select a location to which you want to save the files and click **Save**.

The log files for this task are saved to the selected location.

NOTE Windows Explorer does not allow you to view the logs if you are logged in with restricted (nonadministrator) user credentials. To avoid this situation, save the log files in a public folder.

Export All Log Files

You can export the log files of all tasks that are present to the current server log files.

Procedure

- 1 Select **File > Export Logs**.
- 2 Select a location to which you want to save the files, and click **Save**.
All current server log files are saved to the selected directory.
- 3 Open the log files with a text editor.

Back-End and Client Log Files Locations

Converter Standalone saves log files as it operates.

[Table 6-1](#) lists the default locations where log files are saved. You can view the log files or send them to VMware support, if necessary.

These file locations are also the file locations on the remote machine if you are running a remote hot clone. To send these log files from a remote machine to VMware support, you must manually compress and send them.

Table 6-1. Log Files Locations

Log Files	File Path
Converter Standalone server and agent log files	%ALLUSERSPROFILE%\Application Data\VMware\VMware vCenter Converter Standalone\logs*
Converter Standalone client log files	%USERPROFILE%\Local Settings\Application Data\VMware\VMware vCenter Converter Standalone\Logs*

Filter the Tasks in the Task List

The number of archived tasks can grow to be very large. To minimize clutter in the task list, you can lower the number of tasks that appear. You can select the tasks that you want the task list to display by filtering them.

You can filter tasks by history, status, or multiple criteria.

- [Filter Tasks by History](#) on page 87
You can use the date on which a task is submitted to filter the task list.
- [Filter Tasks by Status](#) on page 87
You can change which tasks appear in the task list based on their running status.
- [Filter Tasks by Multiple Criteria](#) on page 88
You can combine filtering criteria to filter tasks in the task list. Tasks that are currently running are displayed regardless of the filtering criteria you apply.

Filter Tasks by History

You can use the date on which a task is submitted to filter the task list.

This option does not affect tasks in progress. Tasks in progress always appear in the task list.

Procedure

- ◆ On the main menu, click **View > History Filter** and select a level of filtering.

Only tasks that correspond to the selected filtering level remain in the task list.

Filter Tasks by Status

You can change which tasks appear in the task list based on their running status.

Procedure

- 1 On the main menu, select **View > Filter by**.
- 2 Select a level of display from the drop-down menu.

If you are connected to a remote Converter Standalone server, you can select **My own** to view only tasks that you create.

Filter Tasks by Multiple Criteria

You can combine filtering criteria to filter tasks in the task list. Tasks that are currently running are displayed regardless of the filtering criteria you apply.

Procedure

- ◆ Use the drop-down menus in the toolbar to select the status and history criteria.

The two filtering conditions combine to show only tasks that comply with both conditions.

If you select **Failed** and **Past week** filters, the resulting task list contains their combined output:

- All tasks with failed status that were active within the last 24 hours
- All tasks with failed status that were completed in the past 7 days

Index

A

- Acronis True Image, source **21**
- add a disk **51, 52**
- adding tasks **84**
- advanced customization
 - guest operating system **61**
 - installing VMware Tools **64**
 - removing system restore checkpoints **65**
 - synchronizing source and destination **68**
- agent **8**
- allocate memory **58**
- audience **5**

C

- changing the number of tasks displayed **87**
- client **8**
- cloning
 - cold, defined **9**
 - disk based **14**
 - disk-based cloning **15**
 - full clones **15**
 - hot, defined **9**
 - linked clones **15**
 - volume based **14**
 - volume-based cloning **14**
- cloning modes **14**
- cold cloning
 - boot CD **13**
 - defined **9**
- command-line commands **34**
- components **8**
- configuration options **77**
- configuration, submitting task **81**
- configure the conversion task **65**
- configure the hardware
 - allocate memory **58**
 - configure the Helper VM network **60**
 - configure the network settings **59**
 - edit the number of processors **57**
 - specify a disk controller **58**
- configure the hardware of the destination machine **49**
- configure the network settings **59**
- configure the software **60**

- configuring
 - domain details **80**
 - guest operating system **77**
 - install VMware tools **77**
 - removing system restore checkpoints **81**
 - selecting a source **74**
 - selecting VMware Fusion source **74**
 - selecting VMware Player source **74**
 - selecting VMware Server source **74**
 - selecting Workstation source **74**
 - sysprep files locations **27**
 - Sysprep files locations **73**
 - time zone **79**
 - updating drivers **81**
 - workgroup **80**
- configuring permissions for vCenter users **24**
- connect to a remote Converter Standalone server **37**
- controlling the number of concurrent tasks **84**
- conversion limitations
 - configuration limitations **22**
 - Linux guest limitations **22**
 - powered-on machine limitations **22**
 - third-party images limitations **22**
 - third-party virtual machines or system images **23**
 - virtual machines **22**
 - VSS snapshots **28**
 - windows guest limitations **22**
- conversion tasks
 - editing **85**
 - managing **83**
 - maximum running **84**
 - starting **40**
 - submitting **71**
 - viewing summary **71**
- conversion throttling **70**
- conversion wizard, starting **40**
- conversion, viewing task summary **71**
- Converter Standalone
 - installing client in Windows **31**
 - installing in Windows **31**
 - installing server and agent in Windows **31**
 - modifying installation in Windows **35**
 - repairing in Windows **36**

- converting
 - existing system images **16**
 - existing virtual machines **16**
- converting machines **39**
- converting, powered-on machines **68**
- copy all disks **56**
- copy disks or volumes
 - copy all disks **56**
 - create an expandable disk on a hosted destination **54**
 - create an expandable disk on a managed destination **54**
 - delete a disk **55**
 - move a disk to a different datastore **53**
 - move a volume to a different datastore **52**
 - move a volume to a different virtual disk **51**
 - resize a volume **50**
 - skip a volume **51**
- create an expandable disk on a hosted destination **54**
- create an expandable disk on a managed destination **54**
- customization **27**
- customize the location **47**
- customizing
 - computing resources **70**
 - tasks throttling **70**
- customizing the guest operating system **61**

D

- data to copy **49**
- delete a disk **55**
- deleting tasks **85**
- destination
 - ESX host **23**
 - vCenter Server **23**
 - VirtualCenter **23**
 - VMware Fusion **23**
 - VMware Player **23**
 - VMware Server **23**
 - Workstation **23**
- destination machine
 - folder **46**
 - naming **46**
 - power on **69**
- destination services, startup mode **66**
- destination setup
 - computer information **61**
 - DNS **63**
 - domain details **64**
 - guest operating system **61**
 - network adapters **63**
 - SID **61**

- time zone **63**
- Windows license **62**
- WINS **63**
- workgroup **64**
- disk
 - 2GB split **16**
 - flat **16**
 - not pre-allocated **16, 54**
 - thin-provisioned **16, 54**
- disk cloning modes
 - disk-based cloning, defined **15**
 - full clones, defined **15**
 - linked clones, defined **15**
 - volume-based cloning, defined **14**
- disk controller **58**
- disk-based cloning **14, 15, 53, 54, 56**
- disks, adding **52**
- dual boot systems **9**
- duplicate ID **17**

E

- edit the number of processors **57**
- editing tasks **84**
- errors, viewing in the log files **86**
- ESX host
 - destination **23**
 - source **21**
 - support **21**
- ESX VM, source **42**
- exporting
 - to hosted formats **46, 48**
 - to managed formats **46**
- exporting a single task log file **86**
- exporting all log files **86**

F

- feedback **5**
- full clones, defined **15**

G

- glossary **5**
- guest operating system configuration
 - computer information **78**
 - DNS **79**
 - domain **80**
 - network adapters **79**
 - SID **78**
 - time zone **79**
 - Windows license **79**
 - WINS **79**
 - workgroup **80**
- guest operating system customization
 - computer information **61**

- DNS **63**
 - network adapters **63**
 - SID **61**
 - time zone **63**
 - Windows license **62**
 - WINS **63**
 - workgroup and domain page **64**
 - guest operating system, configuration **77**
 - guest operating system, customization **61**
 - guest operating system, customizing **61**
 - GUID Partition Table (GPT) disks **14**
- ## H
- Helper VM **60**
 - hosted destinations
 - converting to **48**
 - Fusion **48**
 - VMware Server **48**
 - Workstation **48**
 - hosted VM, source **44**
 - hot cloning
 - defined **9**
 - Linux sources **12**
 - Windows sources **11**
 - hot cloning, synchronization **68**
 - Hyper-V Server VM, source **45**
 - Hyper-V, source **21**
- ## I
- importing machines
 - configure the hardware **49**
 - customize the location **47**
 - select a source machine **40**
 - install VMware Tools **64, 77**
 - installation space requirements **20**
 - installing **31**
 - installing Converter Standalone, in Windows **31**
 - installing VMware vCenter Converter Standalone,
 - Windows command-line installation **33**
 - introduction **7**
 - IPng support **24**
 - IPv6 support **24**
- ## L
- linked clones **14**
 - linked clones, defined **15**
 - live cloning, *See* hot cloning
 - log files, exporting and viewing **86**
 - logs, location **87**
- ## M
- managing tasks
 - adding to task list **84**
 - canceling **84, 85**
 - changing the number of tasks displayed **87**
 - checking task progress **85**
 - deleting **85**
 - filtering tasks by history **87**
 - filtering tasks by status **87**
 - multiple-criteria filtering **88**
 - task view **83**
 - Master Boot Record (MBR) disks **14**
 - maximum number of tasks **84**
 - Microsoft Virtual PC, source **21**
 - Microsoft Virtual Server, source **21**
 - modes of cloning **14**
 - modifying **35**
 - move a disk to a different datastore **53**
 - move a volume to a different datastore **52**
 - move a volume to a different virtual disk **51**
- ## N
- network settings **59, 60**
 - not pre-allocated disks **54**
- ## O
- offline cloning, *See* cold cloning
 - online cloning, *See* hot cloning
 - operating systems, support **19**
- ## P
- Parallels Desktop, source **21**
 - permissions, configuring for vCenter users **24**
 - port requirements **25**
 - power off source machine **69**
 - power on destination machine **69**
 - powered-on machine conversion limitations **22**
 - powered-on machine, source **41, 42**
 - progress viewing **86**
- ## R
- reconfiguring, starting the Wizard **74**
 - remote Converter Standalone server **37**
 - repairing **35**
- ## S
- selecting configuration sources
 - VMware Desktop VMs **76**
 - VMware Infrastructure VMs **75**
 - selecting sources
 - ESX virtual machine **42**
 - hosted virtual machine **44**
 - Hyper-V Server VM **45**
 - Linux powered-on machine **42**
 - powered-on machine **41**

- third-party VM **44**
- vCenter Server VM **42**
- Windows powered-on machine **41**
- server **8**
- services
 - on destination **66**
 - on source **67**
- setting up destination
 - computer information **61**
 - DNS **63**
 - domain details **64**
 - guest operating system **61**
 - network adapters **63**
 - SID **61**
 - time zone **63**
 - Windows license **62**
 - WINS **63**
 - workgroup **64**
- setting up SID **78**
- Simple File Sharing, turning off **27**
- skip a volume **51**
- snapshots, limitations **28**
- source machine
 - power off **69**
 - uninstall Converter Standalone agent **70**
- source services, stop **67**
- specify a disk controller **58**
- starting
 - conversion **40**
 - conversion wizard **40**
- starting the reconfiguration wizard **74**
- stop source services **67**
- StorageCraft ShadowProtect, source **21**
- support **5**
- supported destination types
 - ESX host **23**
 - vCenter Server **23**
 - virtual appliances **23**
 - VirtualCenter **23**
 - VMware Fusion **23**
 - VMware Player **23**
 - VMware Server **23**
 - Workstation **23**
- supported operating systems **19**
- supported source types
 - Acronis True Image **21**
 - ESX support **21**
 - Hyper-V **21**
 - Microsoft Virtual PC support **21**
 - Microsoft Virtual Server support **21**
 - Parallels Desktop **21**
 - powered-on machines **21**

- StorageCraft ShadowProtect **21**
- Symantec LiveState Recovery **21**
- vCenter Server **21**
- Virtual Iron **21**
- VirtualCenter support **21**
- VMware Fusion support **21**
- VMware Server support **21**
- VMware virtual machines **21**
- Workstation support **21**
- Xen **21**
- Symantec LiveState Recovery, source **21**
- synchronizing source with destination **68**
- sysprep **27**
- system images, converting existing **16**
- system reconfiguration **9**
- system requirements
 - installation space requirements **20**
 - supported operating systems **19**
 - TCP/IP and UDP port requirements **25**
 - Windows operating systems **26**

T

- task manager
 - adding tasks **84**
 - canceling tasks **84, 85**
 - checking tasks progress **85**
 - combined filtering **88**
 - deleting tasks **85**
 - editing tasks **85**
 - filtering by multiple criteria **88**
 - filtering tasks by history **87**
 - filtering tasks by status **87**
 - number of concurrent tasks **84**
 - viewing task progress **86**
- tasks, adding to list **84**
- tasks, editing **84**
- tasks, filtering **87**
- tasks, managing **83**
- tasks, submitting configuration **81**
- TCP/IP and UDP port requirements **25**
- thin-provisioned destination disks **8**
- thin-provisioned disk **54**
- third-party VM, source **44**
- throttling conversion tasks **70**
- time zone configuration **79**

U

- uninstall Converter Standalone agent **70**
- uninstalling **31**
- uninstalling VMware vCenter Converter Standalone, in Windows **36**

V

- vCenter Converter
 - migration with **8**
 - tasks **8**
- vCenter permissions **24**
- vCenter Server, destination **23**
- vCenter Server support **21**
- vCenter Server virtual machines **43**
- vCenter Server VM, source **42**
- version support **21**
- viewing a task's progress **86**
- viewing conversion task summary **71**
- viewing the log files **86**
- virtual disk **51, 52**
- virtual disk, adding **52**
- virtual hardware
 - CPU issues **17**
 - disk device issues **17**
 - Ethernet adapter issues **17**
 - graphics card issues **17**
- Virtual Iron, source **21**
- virtual machines
 - conversion limitations **22**
 - converting existing **16**
 - destination on same network as source **16**
- VirtualCenter
 - destination **23**
 - source **21**
 - support **21**
- VMware Fusion
 - destination **23**
 - source **21**
 - support **21**
- VMware hosted products support **21**
- VMware managed products support **21**
- VMware Player
 - destination **23**
 - source **21**
 - support **21**

- VMware Server
 - destination **23**
 - source **21**
 - support **21**
- VMware Tools **64**
- VMware vCenter Converter Boot CD **8**
- VMware vCenter Converter Standalone
 - command-line installation in Windows **33**
 - installing remote access in Windows **32**
 - uninstalling in Windows **36**
- volume-based cloning **14, 50–52, 54, 55**
- volume-based cloning, defined **14**
- volume, supported types **14**
- volumes, excluding **51**
- volumes, moving **52**
- volumes, resizing **50**
- VSS snapshots limitations **28**

W

- Windows, Simple File Sharing **27**
- Windows virtual machines, configuring **73**
- Windows XP, turning off Simple File Sharing **27**
- Windows XP, checking Windows Firewall
 - blocks **27**
- worker **8**
- Workstation
 - destination **23**
 - source **21**
 - support **21**

X

- Xen, source **21**

